



The Global Language of Business

Despatch Advice Business Message Standard (BMS)

Release 3.5.1, Draft, Jan 2022



Document Summary

Document Item	Current Value
Document Name	Despatch Advice Business Message Standard (BMS)
Document Date	Jan 2022
Document Version	3.5.1
Document Issue	1
Document Status	Draft

Work Request Reference

Date of WR Submission to GSMP:	WR Submitter(s):	Refer to Change Request (WR) Number(s):
25-Feb-2010	GS1 Netherlands	10-000068
15-Oct-2009	GS1 Australia, GS1 Germany, GS1 Netherlands	09-000240
15-Oct-2009	GS1 Australia, GS1 Germany, GS1 Netherlands	09-000238
15-Oct-2009	GS1 Australia, GS1 Germany, GS1 Netherlands	09-000236
15-Oct-2009	GS1 Australia, GS1 Germany, GS1 Netherlands	09-000235
15-Oct-2009	GS1 Australia, GS1 Germany, GS1 Netherlands	09-000233
20-Aug-2008	GS1 Global Office	08-000209
14-Mar-2008	GS1 Australia	08-000054
29-Feb-2008	GS1 Netherlands	08-000039
16-Nov-2007	Accenture	07-000426
03-Jul-2007	GS1 Global Office	07-000271
21-Mar-2007	GS1 Netherlands	07-000103
30-Nov-2004	GS1 Global Office	04-000224
09-Oct-2004	GS1 France	04-000178
09-Jul-2014	Philips Electronics N.V.	13-000106
13-Dec-2013	GS1 Germany	13-000203
13-Dec-2013	GS1 Germany	13-000204
20-May-2014	GS1 Germany	14-000084
07-Feb-2014	GS1 Germany	14-000044
20-Mar-2014	GS1 Slovenia	14-000021
25-Jun-2014	GS1 Global Office	14-000110
02-Feb-2015	GS1 Spain	15-000038
18-Jan-2016	GS1 Germany	16-000024
18-Jan-2016	GS1 Germany	16-000031
18-Jan-2016	GS1 Germany	16-000060
18-Jan-2016	GS1 Germany	16-000061
18-Jan-2016	GS1 Germany	16-000068
18-Jan-2016	GS1 Germany	16-000069
18-Jan-2016	GS1 Germany	16-000079

Date of WR Submission to GSMP:	WR Submitter(s):	Refer to Change Request (WR) Number(s):
18-Jan-2016	GS1 Germany	16-000083
18-Jan-2016	GS1 Germany	16-000084
18-Jan-2016	GS1 Germany	16-000085
18-Jan-2016	GS1 Germany	16-000086
18-Jan-2016	GS1 Germany	16-000087
18-Jan-2016	GS1 Germany	16-000088
18-Jan-2016	GS1 Germany	16-000089
18-Jan-2016	GS1 Germany	16-000090
18-Jan-2016	GS1 Germany	16-000091
18-Jan-2016	GS1 Germany	16-000092
18-Jan-2016	GS1 Germany	16-000093
18-Jan-2016	GS1 Germany	16-000094
18-Jan-2016	GS1 Germany	16-000095
18-Jan-2016	GS1 Germany	16-000096
18-Jan-2016	GS1 Germany	16-000099
18-Jan-2016	GS1 Germany	16-000100
08-Apr-2016	GS1 France	16-000245
08-Apr-2016	GS1 France	16-000246
01-Jul-2016	JDA Software Group	16-000349
22-Jun-2018	GS1 France	17-000034
22-Jun-2018	GS1 France	17-000037
22-Jun-2018	GS1 France	17-000039-40
22-Jun-2018	GS1 France	17-000036
22-Jun-2018	JDA Software Group	17-000311-318
22-Jun-2018	GS1 Czech Republic	18-000145
03-Oct-2018	GS1 Global Office	18-000319

Business Requirements Document (BRAD) Reference

BRAD Title:	BRAD Date:	BRAD Version
BRAD Despatch Advice Country of Processing and Origin	20070606	0.0.4
BRD Despatch Advice – Business Requirement Document	20041111	1.0.9.3
BRAD Upstream Standards – Despatch, Receipt and Consumption	20041129	0.1.1
BRD Exchange Traceability and Processing History Data of Beef Products (Slaughter to Retail)	20051102	2.50
BRAD for Current Requirements Queue (Major Release 3)	20101123	Issue 0.2.0

Document Change History

Date of Change	Version	Changed By	Reason for Change	Summary of Change
12-Jan-2012	BMS 3.0 – Issue 1	Mark Van Eeghem	BMS Release 3.0	See summary of changes
01-May-2013	BMS 3.1 – Issue 1	Coen Janssen	BMS Release 3.1	See summary of changes
15-Sep-2014	BMS 3.2 – Issue 1	Ewa Iwicka	BMS Release 3.2	See summary of changes
01-Mar-2017	BMS 3.3 – Issue 1	Ewa Iwicka	BMS Release 3.3	See summary of changes
04-Feb-2021	BMS 3.5 – Issue 1	Miklos Bolyky	BMS Release 3.5	See summary of changes
05-Jan-2022	BMS 3.5.1 – Issue 1	Miklos Bolyky	BMS Release 3.5.1	See summary of changes

Disclaimer

GS1®, under its IP Policy, seeks to avoid uncertainty regarding intellectual property claims by requiring the participants in the Work Group that developed this **Despatch Advice Business Message Standard (BMS)** to agree to grant to GS1 members a royalty-free licence or a RAND licence to Necessary Claims, as that term is defined in the GS1 IP Policy. Furthermore, attention is drawn to the possibility that an implementation of one or more features of this Specification may be the subject of a patent or other intellectual property right that does not involve a Necessary Claim. Any such patent or other intellectual property right is not subject to the licencing obligations of GS1. Moreover, the agreement to grant licences provided under the GS1 IP Policy does not include IP rights and any claims of third parties who were not participants in the Work Group.

Accordingly, GS1 recommends that any organization developing an implementation designed to be in conformance with this Specification should determine whether there are any patents that may encompass a specific implementation that the organisation is developing in compliance with the Specification and whether a licence under a patent or other intellectual property right is needed. Such a determination of a need for licencing should be made in view of the details of the specific system designed by the organisation in consultation with their own patent counsel.

THIS DOCUMENT IS PROVIDED “AS IS” WITH NO WARRANTIES WHATSOEVER, INCLUDING ANY WARRANTY OF MERCHANTABILITY, NONINFRINGEMENT, FITNESS FOR PARTICULAR PURPOSE, OR ANY WARRANTY OTHER WISE ARISING OUT OF THIS SPECIFICATION. GS1 disclaims all liability for any damages arising from use or misuse of this Standard, whether special, indirect, consequential, or compensatory damages, and including liability for infringement of any intellectual property rights, relating to use of information in or reliance upon this document.

GS1 retains the right to make changes to this document at any time, without notice. GS1 makes no warranty for the use of this document and assumes no responsibility for any errors which may appear in the document, nor does it make a commitment to update the information contained herein.

GS1 and the GS1 logo are registered trademarks of GS1 AISBL.

Table of Contents

1	Business Domain View	6
1.1	Introduction	6
1.2	References	6
2	Business Context	7
3	Business Transaction View	7
3.1	Business Transaction - Generate Despatch Advice	7
3.2	Business Transaction - Despatch Notification	9
3.3	Business Transaction - Cross Dock Despatch Advice	10
4	Business Information View	13
4.1	Despatch Advice	13
4.2	Despatch Advice Totals	18
4.3	Split Delivery Reference	19
4.4	Despatch Advice Transport Information.....	21
4.5	Despatch Advice Line Item	24
4.6	Despatch Advice Logistic Unit	30
4.7	Enumerations (message specific)	32
4.8	Code Lists	32
5	Business Message Examples	33
5.1	Example 1	33
5.2	Example 2	34
6	Implementation Considerations.....	37
6.1	User Guide	37
6.2	Message Specific Considerations	37
6.2.1	Document referencing	37
6.2.2	Packaging hierarchy	37
7	Summary of Changes	41
7.1	BMS Release 3.0	41
7.2	BMS Release 3.1	42
7.3	BMS Release 3.2	42
7.4	BMS Release 3.3	45
7.5	BMS Release 3.4	54
7.6	BMS Release 3.5	56
7.1	BMS Release 3.5.1	59
8	Appendices	59
9	Acknowledgements.....	59
9.1	Work Group	59
9.2	Development Team Members.....	60

1 Business Domain View

1.1 Introduction

Message Definition

The Despatch Advice enables a shipper to provide information about the content of a shipment to a receiver. Usually the Despatch Advice serves as a pre-announcement of the goods being shipped. In a pick-up scenario it may also serve as a pre-announcement of goods to be collected.

Principles

The objective of the Despatch Advice is to facilitate the following processes:

- The receipt of goods
- The replenishment scenario where there is no link to an order, but to a contract or other kind of agreement
- Multiple destination points
- To provide detailed information about the shipment as well as the content of a shipment from a shipper and if applicable the shipper's warehouse to the receiver and his warehouse
- The despatch of goods being returned

Despatch Advice can also be used in a cross-docking delivery by including information in the information about:

- The cross dock and final destination of the delivery
- The requested delivery date/time on the cross dock and final destination

1.2 References

Reference #	Reference Name	Description
[Ref 1]	BRD Exchange Traceability and Processing History Data of Beef Products (Slaughter to Retail) Version 2.50	
[Ref 2]	BRAD Upstream Standards – Despatch, Receipt & Consumption Version 0.1.1	
[Ref3]	BRD Despatch Advice Version 1.0.9.3	
[Ref4]	BMS Common Library Release Version 3.5.1	The documented design of components that are used in multiple messages.
[Ref 5]	BRAD Despatch Advice Country of Processing and Origin Version 4	Details the country of processing and origin requirements.
[Ref 6]	BMS Shared Common Library Release 3.5.1	The documented design of components that are used in both GDSN and eCom.
[Ref 7]	BMS eCom DomainCommon Library Release 3.5.1	The documented design of components that are used in multiple messages in the eCom Domain.

Reference #	Reference Name	Description
[Ref 8]	BMS Cross_Dock_Despatch_Advice_Extension_r2p5p0_i1p1p1_06_Feb_2009	The documented design of the cross dock extension on Despatch Advice.

2 Business Context

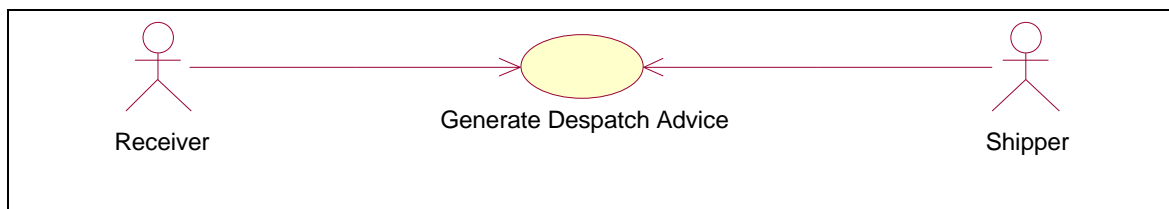
Context Category	Value(s)
Industry	All
Geopolitical	Global
Product	All
Process	Deliver
System Capabilities	GS1 System
Official Constraints	None

3 Business Transaction View

3.1 Business Transaction - Generate Despatch Advice

Use Case Diagram

Figure 3-1 Use Case Generate Despatch Advice



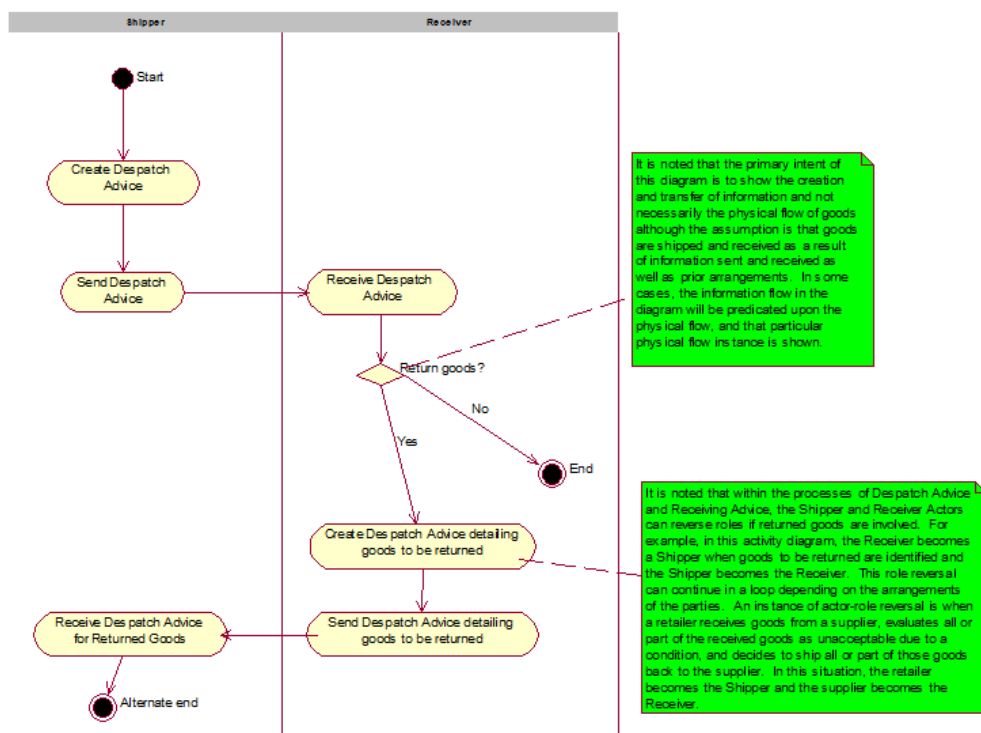
Use Case Description

Use Case ID	GDA
Use Case Name	Generate Despatch Advice
Use Case Description	Describes a complete process whereby a Shipper generates a Despatch Advice based on information about the order and the product.
Actors (Goal)	Receiver and Shipper
Performance Goals	None
Preconditions	Master data alignment of locations (GLNs) and products (GTINs).
Post conditions	Check of the received physical goods with the information of the Despatch Advice and the check of the state of the goods themselves.

Scenario	<p>Begins when...</p> <p>The Receiver receives a shipment of goods accompanied or preceded by the Despatch Advice or Shipping Documents.</p> <p>Continues with...</p> <table><tr><th>Step #</th><th>Actor</th><th>Activity Step</th></tr><tr><td>1</td><td>Shipper</td><td>Shipper issues the Despatch Advice containing the information of the actual physical shipment.</td></tr><tr><td>2</td><td>Receiver</td><td>Receiver receives Despatch Advice.</td></tr></table> <p>Ends when...</p> <p>If necessary, Receiver creates and sends Despatch Advice to Shipper indicating returned goods. *See role reversal note in activity and sequence diagrams.</p>	Step #	Actor	Activity Step	1	Shipper	Shipper issues the Despatch Advice containing the information of the actual physical shipment.	2	Receiver	Receiver receives Despatch Advice.
Step #	Actor	Activity Step								
1	Shipper	Shipper issues the Despatch Advice containing the information of the actual physical shipment.								
2	Receiver	Receiver receives Despatch Advice.								
Alternative Scenario	Not Applicable									
Related Requirements	The Despatch Advice must contain certain information, in line item format, to convey comparative information to the Receiver. The Despatch Advice therefore will provide for the identification of the individual lines within the Despatch Advice by line sequence number. The Despatch Advice may provide for a reference to other related documents, such as the Order, Delivery Note and Consignment. The Despatch Advice may also include a reference to a contract and may include the line sequence numbers from the documents Order, Delivery Note, Consignment and Contract.									
Related Rules	Not Applicable									

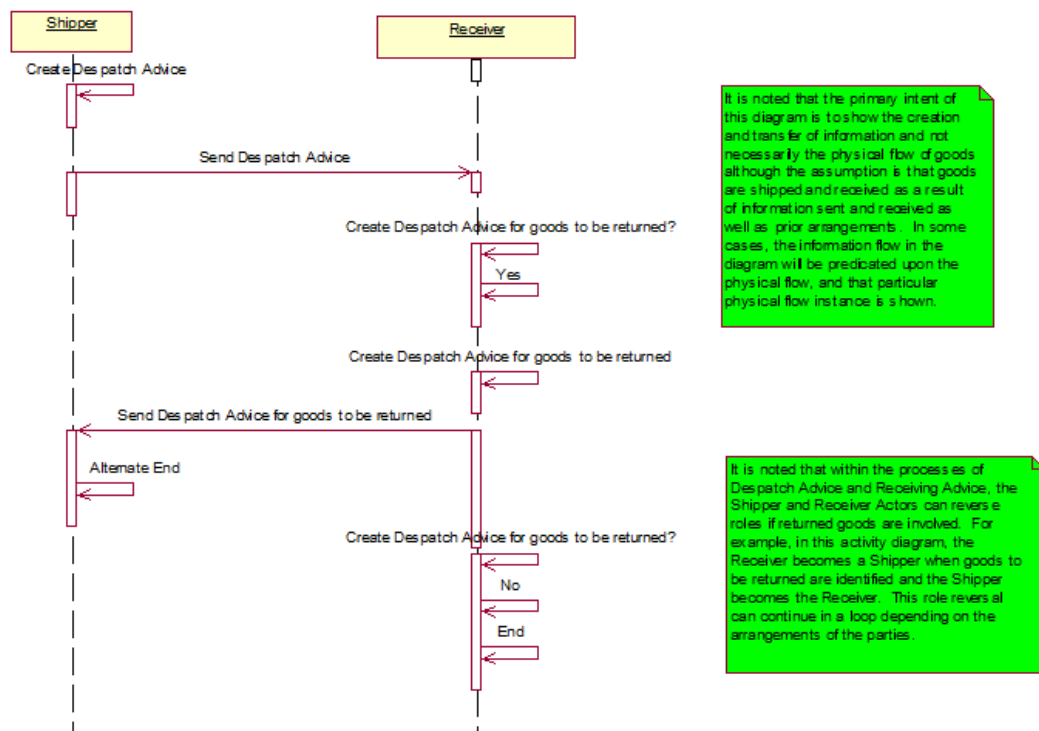
Business Transaction Activity Diagram

Figure 3-2 Activity Diagram Generate Despatch Advice



Business Transaction Sequence Diagram

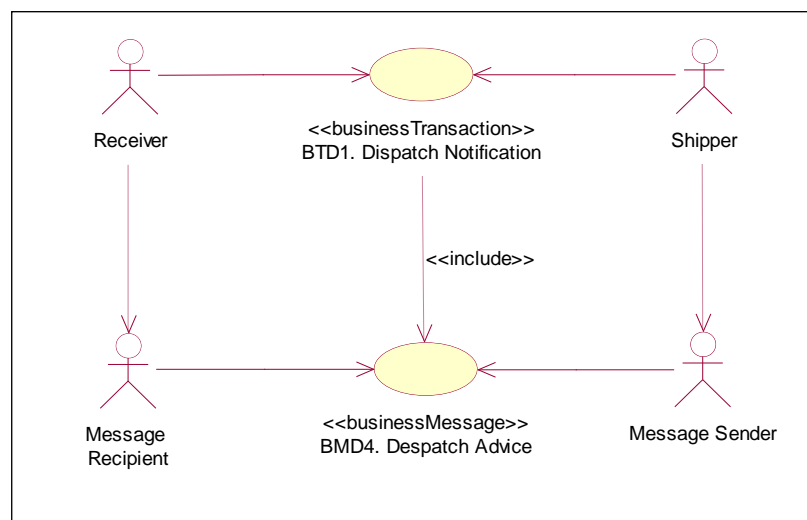
Figure 3-3 Sequence Diagram Generate Despatch Advice



3.2 Business Transaction - Despatch Notification

Use Case Diagram

Figure 3-4 Business Transaction Despatch Notification



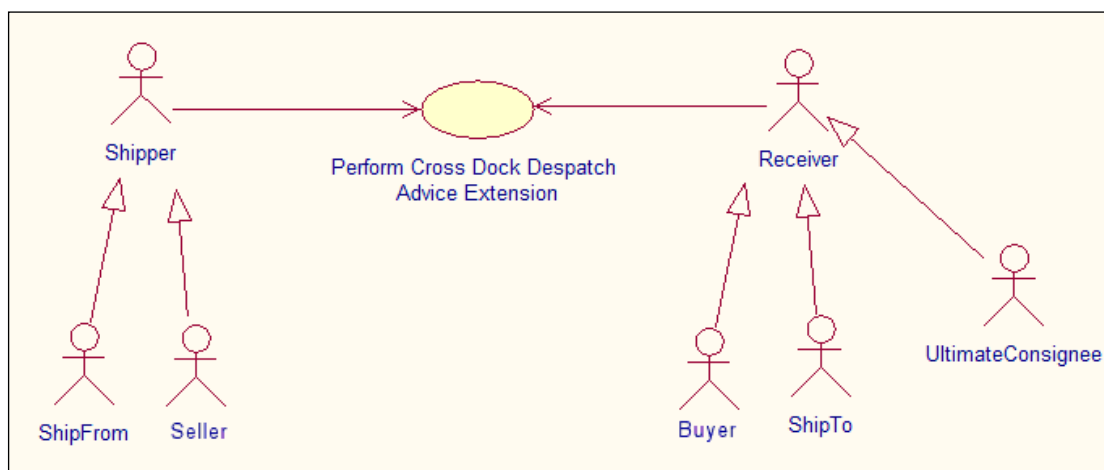
Use Case Description

Use Case ID	BTD1
Use Case Name	Dispatch Notification

Use Case Description	<p>The Dispatch Notification enables the supplier / carrier to provide detailed information about the content of a shipment and enables a buyer to reconcile or confirm the physical shipment against the order; it provides a mirror of the shipment that is to be made in terms of package details and in terms of structure of the delivery.</p> <p>The Dispatch Notification is sent by the Ship From party to the Ship To party when the goods are sent - goods being sent being considered as in transit.</p>								
Actors (Goal)	Shipper: To notify the receiver in advance of the contents of a shipment. Receiver: To be informed in advance about the contents of a shipment.								
Performance Goals	The information must be received prior to the arrival of the actual shipment.								
Preconditions	Dispatch Notification to be sent								
Post conditions	Dispatch Notification received								
Scenario	<p>Begins when:</p> <p>After the shipment has been picked, packed, labelled and loaded in order to guarantee that the information sent is correct.</p> <p>Continues with:</p> <table><tr><td>Step #</td><td>Actor</td><td>Activity Step</td></tr><tr><td></td><td>Ship From</td><td>Sends Despatch Advice to the Ship To party.</td></tr></table> <p>Ends when: Ship to receives the despatch advice.</p>			Step #	Actor	Activity Step		Ship From	Sends Despatch Advice to the Ship To party.
Step #	Actor	Activity Step							
	Ship From	Sends Despatch Advice to the Ship To party.							
Alternative Scenario	Not Applicable								
Related Requirements	Not Applicable								
Related Rules	Not Applicable								

3.3 Business Transaction - Cross Dock Despatch Advice

Use Case Diagram



Use Case Description

Use Case ID	UC-1
Use Case Name	Perform Cross Dock Despatch Advice Process

Use Case Description	Cross Dock Despatch Advice Extension		
Actors (Goal)	Buyer: Party to which merchandise is sold. (i.e. retailer, wholesaler, store). Seller: Party selling merchandise to a buyer. (i.e. supplier, LSP). Shipper: Party from where goods will be or have been shipped. (i.e. supplier, LSP, retailer). Receiver: Party to where goods will be or have been shipped. (i.e. LSP, retailer, store). Ultimate Consignee: Party which is the final destination of where the goods will be or have been shipped to.		
Performance Goals	To perform and execute the despatch Advice within the specific context of Cross docking.		
Preconditions			
Post conditions			
Scenario	Begins when: the Ship From Party closed the doors of the delivery vehicle		
	Step	Actor	Activity Step
	1	ShipFrom /Shipper	Sends Despatch Advice to the ShipToParty on the CrossDock Station
	2	ShipTo/Receiver	Receives Despatch Advice from the Ship From part and checks the delivered goods through scanning the SSCCs
	3	ShipFrom/Shipper	Picks the goods per final destinations and sends a Despatch Advice to the ShipTo party of the final destination (Ultimate consignee)
	4	ShipTo/Receiver	Receives the Despatch Advice from the ShipFrom party and checks the delivered goods.
	5		
	Ends when... the ShipTo Party/Receiver on the final destination accepts the delivered goods.		
Alternative Scenario	(any alternatives to the above scenario)		
Related Requirements			
	1		
Related Rules			
	1	The party which makes the DESADV must make and send the Despatch Advice to the Ship To Party/Receiver after the moment that the doors of the delivery vehicle are closed.	
	2	By a cross dock delivery a Ship From Party/Shipper can send a Despatch Advice per final destination (Ultimate Consignee) or one Despatch Advice with the information for all the final destinations. For example: Delivery of a consignment (more shipments) to a Cross Dock Station. The consignment contains a shipment with 2 pallets for destination A and a shipment with 3 pallets for destination B. The Ship From Party can send 2 separate despatch advice (one for destination A and one for destination B) or only one despatch advice with the information for destination A and destination B).	
	3	If all the information for all the final destinations are sent in the same despatch advice, the message will be structured by final location.	

Business Transaction Activity Diagram

Not Applicable

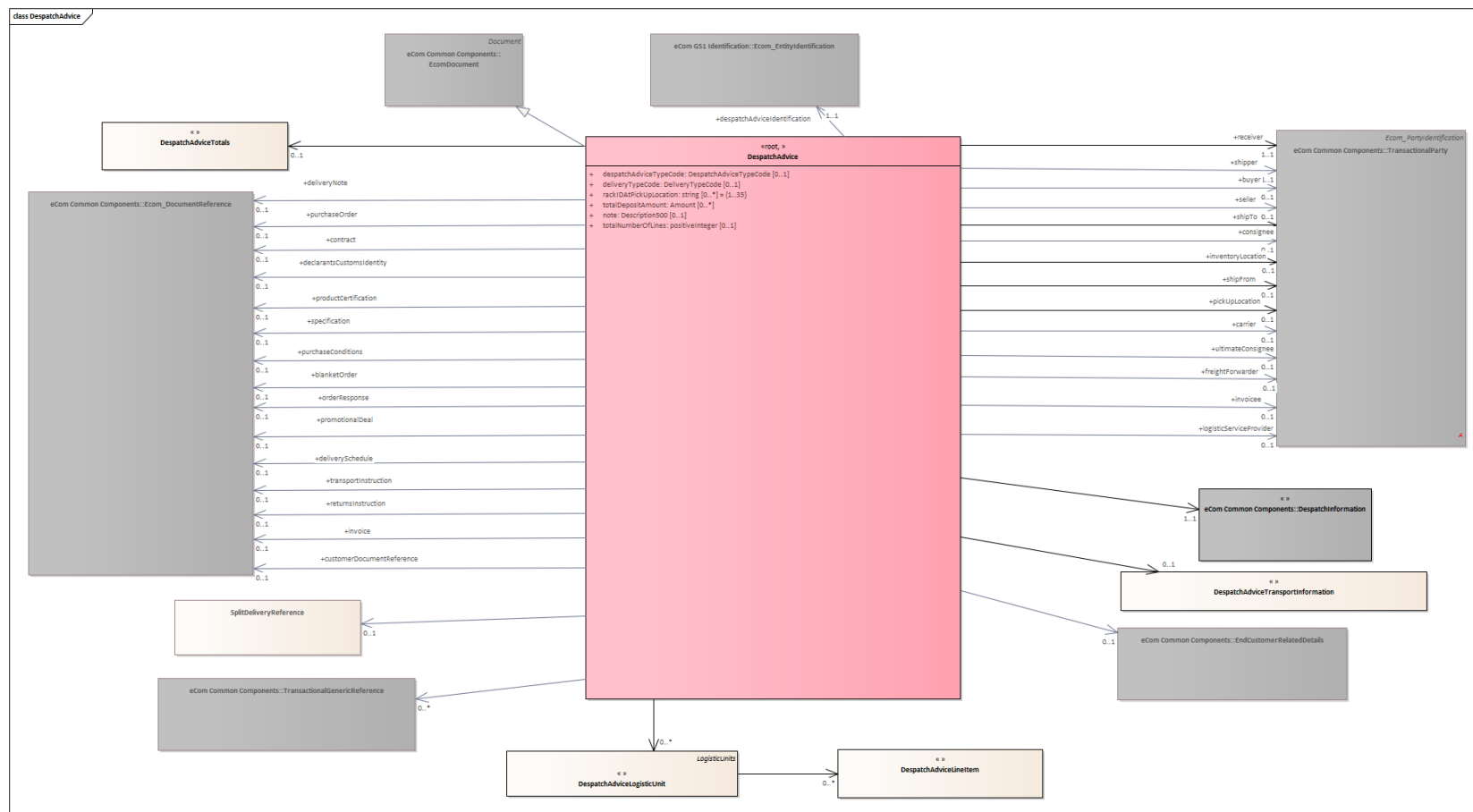
Business Transaction Sequence Diagram

Not Applicable

4 Business Information View

4.1 Despatch Advice

Class diagram



GDD report

The content of the DespatchAdvice class, its structure and component definitions can be accessed in the Global Data Dictionary:

http://apps.gs1.org/GDD/bms/Version3_4/Pages/bieDetails.aspx?semanticURN=urn:gs1:gdd:bie:DespatchAdvice

Content	Attribute / Role	Datatype / Secondaryclass	Multiplicity	Definition	Requirements
DespatchAdvice				The Despatch Advice enables a shipper to provide information about the content of a shipment to a receiver. Usually the Despatch Advice serves as a pre-announcement of the goods being shipped. In a pick-up scenario it may also serve as a pre-announcement of goods to be collected.	
Association	specification	Ecom_DocumentReference	0..1	An essential technical requirement for items, materials or services, including the procedures to be used to determine whether the requirement has been met. Specifications may also include requirements for preservation, packaging, packing, and marking.	WR 15-000314
Association	logisticServiceProvider	TransactionalParty	0..1	A party providing logistic services - if different from Carrier.	WR 16-000092
Association	ultimateConsignee	TransactionalParty	0..1	Identifies the party that is the final destination for the shipment.	
Association	purchaseOrder	Ecom_DocumentReference	0..1	Reference to the business document that triggered the delivery of the goods.	WR 15-000314
Association	declarantsCustomsIdentity	Ecom_DocumentReference	0..1	Reference to the party whose posted bond or security is being declared in order to accept responsibility for a goods declaration and the applicable duties and taxes.	WR 15-000314
Association	returnsInstruction	Ecom_DocumentReference	0..1	Reference to a document specifying the instruction for the item's return.	WR 15-000314 WR 16-000090
Association	deliverySchedule	Ecom_DocumentReference	0..1	A reference to the Delivery Schedule document. Used for split deliveries of large quantities.	WR 15-000314 WR 16-000086
Association	freightForwarder	TransactionalParty	0..1	A party that organises shipment, if different from Carrier and Logistic Service Provider.	WR 16-000094



Content	Attribute / Role	Datatype / Secondaryclass	Multiplicity	Definition	Requirements
Association	productCertification	Ecom_DocumentReference	0..1	Number assigned by a governing body (or their agents) to a product which certifies compliance with a standard.	WR 15-000314
Association	seller	TransactionalParty	0..1	Identifies the party which sells products or services to a buyer.	
Association	transportInstruction	Ecom_DocumentReference	0..1	Reference to the Transport Instruction document.	WR 15-000314 WR 16-000084
Association		SplitDeliveryReference	0..1	A reference to corresponding Despatch Advice messages. Used mostly for large quantity deliveries with multiple corresponding Despatch Advice messages.	WR 16-000085
Association	shipFrom	TransactionalParty	0..1	Identification of the location from where the goods will be or have been shipped.	
Association	receiver	TransactionalParty	1..1	A party who engages in receiving goods. In a commercial scenario this would be the customer.	
Association	pickUpLocation	TransactionalParty	0..1	Party where goods are collected or taken over by the carrier (i.e. if other than consignor).	
Association	shipper	TransactionalParty	1..1	A party who engages in shipping goods. In a commercial scenario this would be the supplier.	
Association		DespatchAdviceLogisticUnit	0..*	Information on the logistic units contained in the shipment.	
Association	inventoryLocation	TransactionalParty	0..1	Identification of the location where the goods will be stored.	
Association	shipTo	TransactionalParty	1..1	Identification of the location to where the goods will be or have been shipped.	
Association	Consignee	TransactionalParty	0..1	The party receiving a consignment of goods.	WR-20-422
Association		DespatchInformation	1..1	Information with regards to the despatching or shipping of goods.	
Association		DespatchAdviceTransportInformation	0..1	Information with regards to the transportation and delivery of the shipment.	

Content	Attribute / Role	Datatype / Secondaryclass	Multiplicity	Definition	Requirements
Association		DespatchAdviceTotals	0..1	Aggregated shipment information (across logistic units) such as the total weight.	
Association	despatchAdviceIdentification	Ecom_EntityIdentification	1..1	Unique identifier for the Despatch Advice Message.	WR 15-000314
Association		EndCustomerRelatedDetails	0..1	Allows to specify the final customer that may be different from Ultimate Consignee and their preferred delivery method.	WR 16-000093
Association	blanketOrder	Ecom_DocumentReference	0..1	Reference to the blanket order, which is a document created for general order purposes with later split into quantities and delivery dates and maybe delivery locations.	WR 15-000314 WR 16-000024
Association	invoice	Ecom_DocumentReference	0..1	A reference to the Invoice document.	WR 15-000314 WR 16-000087
Association	contract	Ecom_DocumentReference	0..1	A reference to the Order Response business message.	WR 15-000314
Association	invoicee	TransactionalParty	0..1	A party receiving an invoice - if different from Buyer.	WR 16-000091
Association	orderResponse	Ecom_DocumentReference	0..1	A reference to the Order Response business message.	WR 15-000314 WR 16-000089
Association	purchaseConditions	Ecom_DocumentReference	0..1	Reference to the business document that describes the commercial conditions under which the goods are delivered.	WR 15-000314
Generalization		EcomDocument		Basic information about the content of the message including version number, creation date and time and the placeholder for non-standard attributes.	
Association	promotionalDeal	Ecom_DocumentReference	0..1	Reference to a business document stating the promotional deal conditions.	WR 15-000314 WR 16-000088
Association	customerDocumentReference	Ecom_DocumentReference	0..1	Specifies document referenced by the customer, used e.g. for split orders.	WR 15-000314 WR 16-000068
Association	deliveryNote	Ecom_DocumentReference	0..1	The delivery note accompanying the shipment.	WR 15-000314

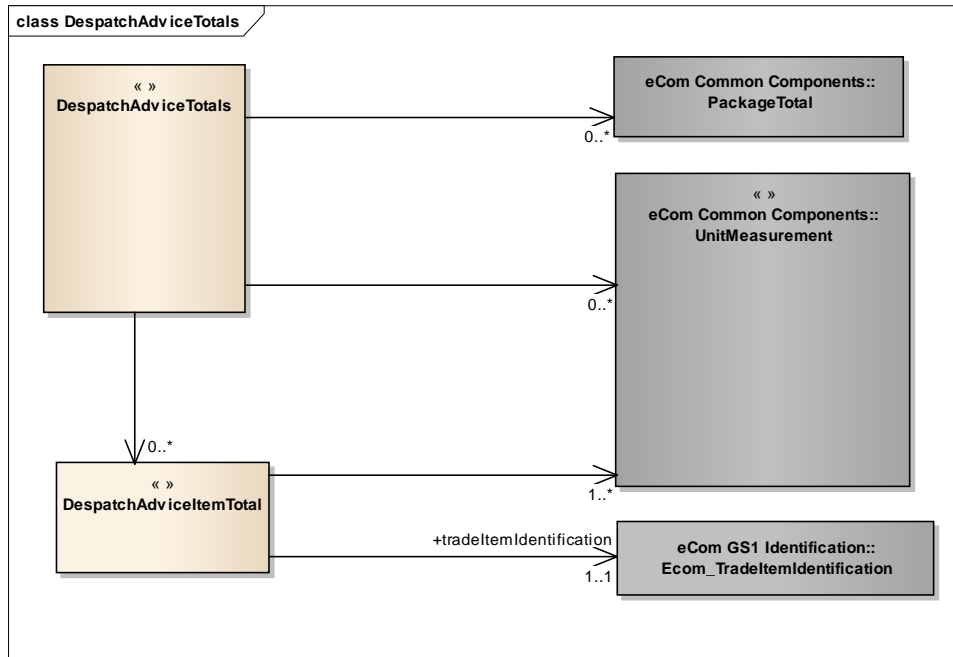
Content	Attribute / Role	Datatype / Secondaryclass	Multiplicity	Definition	Requirements
Association	carrier	TransactionalParty	0..1	Uniquely identifies the party who transports the shipment.	
Association		TransactionalGenericReference	0..*	Reference to an associated information in support of related business processes. E.g. any kind of internal reference, such as a cost center. The type of references are defined in the TransactionalReferenceTypeCode list.	WR 16-000031 WR 16-000069 WR 16-000079
Association	buyer	TransactionalParty	0..1	Identifies the party to which products or services are sold.	
Attribute	despatchAdviceTypeCode	DespatchAdviceTypeCode	0..1	The code specifying the type of despatch advice.	WR-20-000394
Attribute	deliveryTypeCode	DeliveryTypeCode	0..1	Code specifying the completeness of delivery compared to the order instruction.	
Attribute	rackIDAtPickUpLocation	string	0..*	Identification of a warehouse rack in the location for shipment pick-up.	WR 16-000099
Attribute	totalDepositAmount	Amount	0..*	Used to control if the total amount of the deposit corresponds to the number of bank notes of given value. This attribute is used for cash handling purposes.	WR 16-000245
Attribute	note	Description500	0..1	Free text used to convey information that is not processed by applications. Only meant to present the information to a user as on a screen, in a browser, etc.	WR 18-000127
Attribute	totalNumberOfLines	positiveInteger	0..1	The number of all line items in the entire message.	WR 17-000034



Note: Reference Shared Common Library Business Message (BMS) Release 3.5.1 and eCom Domain Common Library Business Message (BMS) Release 3.5.1 for all common information.

4.2 Despatch Advice Totals

Class Diagram



GDD Report

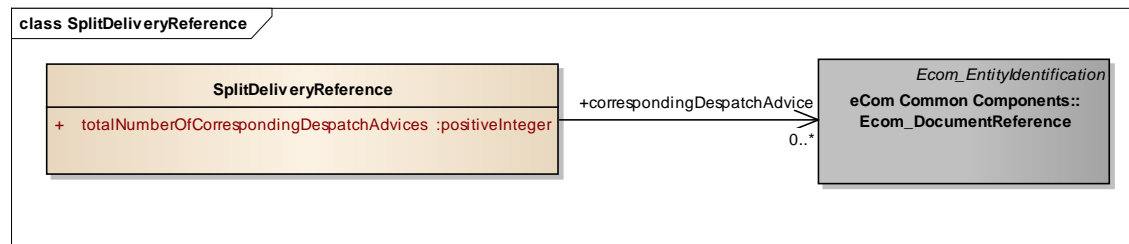
The content of the DespatchAdviceTotals class, its structure and component definitions can be accessed in the Global Data Dictionary:
http://apps.gs1.org/GDD/bms/Version3_4/Pages/bieDetails.aspx?semanticURN=urn:gs1:gdd:bie:DespatchAdviceTotals

Content	Attribute / Role	Datatype / Secondary class	Multiplicity	Definition	Requirements
DespatchAdviceItemTotal				Aggregated shipment information (across logistic units) specified per trade item, such as the total weight of a trade item.	MR3 renamed form ConsignedItemWeight
Association		UnitMeasurement	1..*	The measurement information associated to the despatch advice item total.	
Association	tradeItemIdentification	Ecom_TradeItemIdentification	1..1	The trade item associated to the despatch advice item total.	WR 15-000314

Content	Attribute / Role	Datatype / Secondary class	Multiplicity	Definition	Requirements
DespatchAdvice Totals				Aggregated shipment information (across logistic units) such as the total weight.	MR3 renamed from ConsignmentInformation
Association		PackageTotal	0..*	The total quantity of logistic units and items specified per package type.	
Association		DespatchAdviceItemTotal	0..*	Aggregated shipment information (across logistic units) specified per trade item, such as the total weight of a trade item.	
Association		UnitMeasurement	0..*	The measurement information associated to the despatch advice total.	

4.3 Split Delivery Reference

Class Diagram



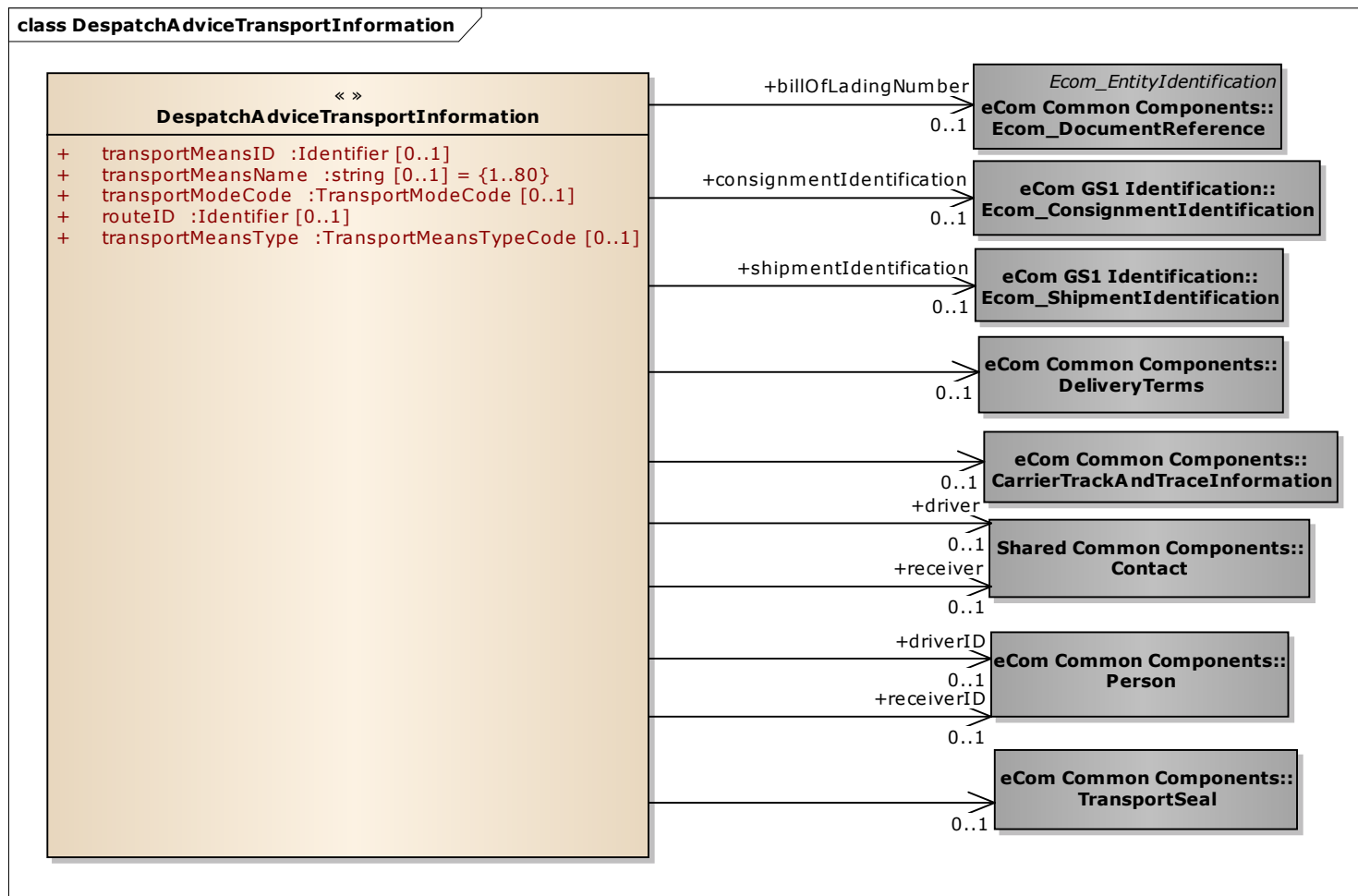
GDD Report

The content of the SplitDeliveryReference class, its structure and component definitions can be accessed in the Global Data Dictionary: http://apps.gs1.org/GDD/bms/Version3_4/Pages/bieDetails.aspx?semanticURN=urn:gs1:gdd:bie:SplitDeliveryReference

Content	Attribute / Role	Datatype /Secondary class	Multiplicity	Definition	Requirements
SplitDeliveryReference				A reference to corresponding Despatch Advice messages. Used mostly for large quantity deliveries with multiple corresponding Despatch Advice messages.	WR 16-000085
Association	correspondingDespatchAdvice	Ecom_DocumentReference	0..*	Provides reference to the corresponding Despatch Advice messages.	WR 15-000314 WR 16-000085
Attribute	totalNumberOfCorrespondingDespatchAdvices	positiveInteger	1..1	The number of all Despatch Advice messages sent for one split delivery. All these messages correspond to one Order. Used for split deliveries of large quantities.	WR 16-000085

4.4 Despatch Advice Transport Information

Class Diagram



GDD Report

The content of the DespatchAdviceTransportInformation class, its structure and component definitions can be accessed in the Global Data Dictionary:

http://apps.gs1.org/GDD/bms/Version3_4/Pages/bieDetails.aspx?semanticURN=urn:gs1:gdd:bie:DespatchAdviceTransportInformation

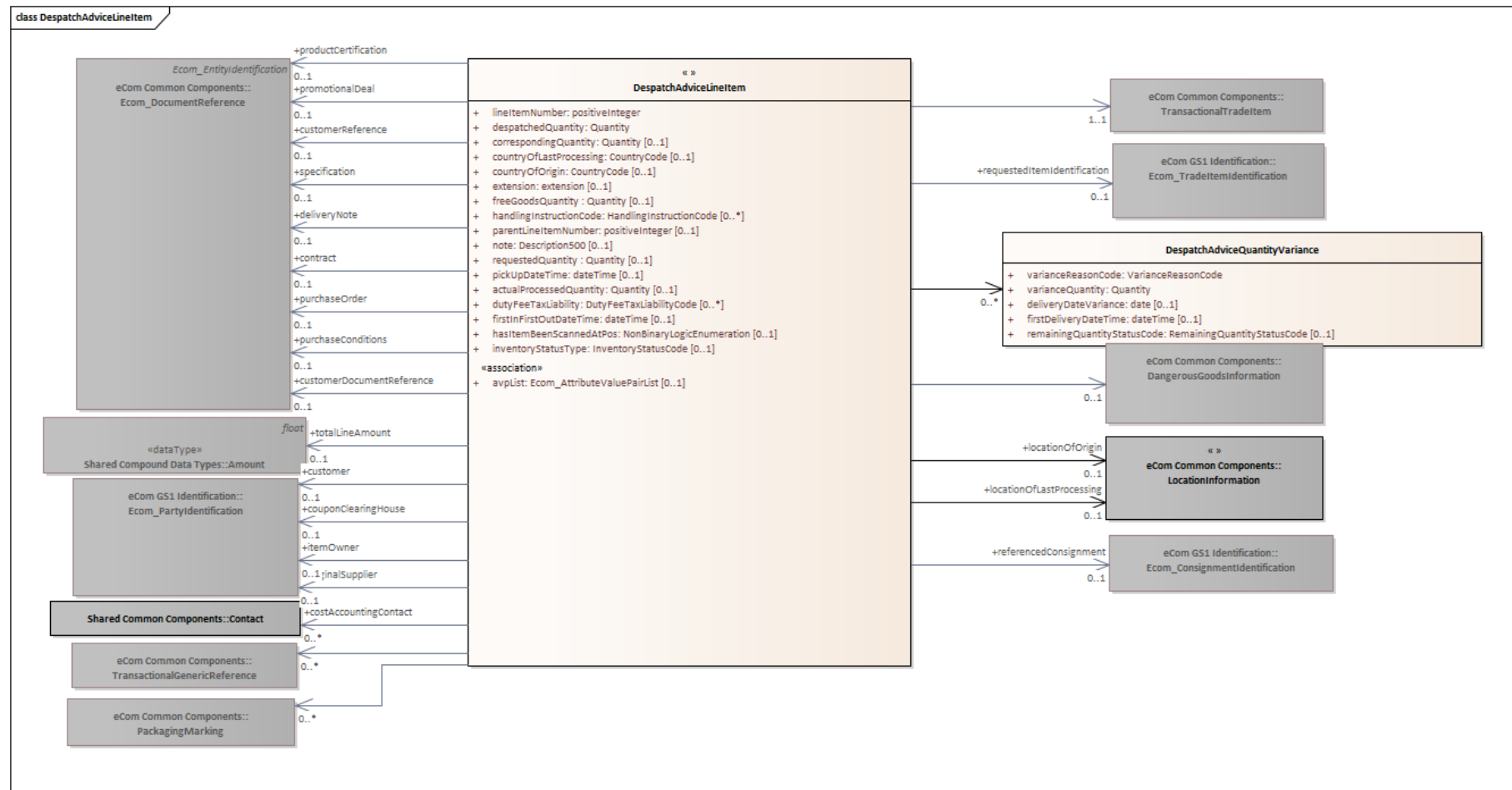
Content	Attribute / Role	Datatype /Secondary class	Multiplicity	Definition	Requirements
DespatchAdviceTransportInformation				Information with regards to the transportation and delivery of the shipment.	
Association		CarrierTrackAndTrace Information	0..1	Tracking and tracing information about the package, provided by the carrier.	
Association		DeliveryTerms	0..1	The delivery terms for the shipment.	
Association	driverID	Person	0..1	Identification information about the driver of the transported goods.	WR 13-000203
Association	driver	Contact	0..1	Contact information to the driver of the transported goods	
Association	receiverID	Person	0..1	Identification information about the person receiving the goods.	WR 13-000203
Association		TransportSeal	0..1	Information on the item attached to a piece of transport equipment used for closing and/or securing the cargo.	WR 16-000095
Association	consignmentIdentification	Ecom_ConsignmentIdentification	0..1	The identification of a consignment related to the shipment specified in the despatch advice.	WR 15-000314
Association	shipmentIdentification	Ecom_ShipmentIdentification	0..1	The identification of the shipment specified in the despatch advice.	WR 15-000314
Association	receiver	Contact	0..1	Contact information to the person receiving the goods.	
Association	billOfLadingNumber	Ecom_DocumentReference	0..1	Reference to the number of the document which evidences a contract of carriage and the taking over or loading of goods by the carrier, and by which the carrier undertakes to deliver the goods against surrender of the document.	WR 15-000314
Attribute	transportMeansID	Identifier	0..1	Vehicle license plate/Aircraft number identifying a means of transport.	
Attribute	transportMeansName	string	0..1	The name, expressed as text, of a particular means of transport. E.g. The vessel name.	



Content	Attribute / Role	Datatype /Secondary class	Multiplicity	Definition	Requirements
Attribute	transportModeCode	TransportModeCode	0..1	Code specifying the mode of transport.	
Attribute	routeID	Identifier	0..1	Unique identifier of the standard route that will be used for this transport movement.	
Attribute	transportMeansType	TransportMeansType Code	0..1	Code specifying a transport means type.	WR 17-000311 - 17-000318

4.5 Despatch Advice Line Item

Class Diagram



GDD Report

The content of the DespatchAdviceLineItem class, its structure and component definitions can be accessed in the Global Data Dictionary:

http://apps.gs1.org/GDD/bms/Version3_4/Pages/bieDetails.aspx?semanticURN=urn:gs1:gdd:bie:DespatchAdviceLineItem

Content	Attribute / Role	Datatype / Secondary class	Multiplicity	Definition	Requirements
DespatchAdviceLineItem				Information specifying the contents, characteristics, history and physical characteristics of delivered goods.	
Association	purchaseOrder	Ecom_DocumentReference	0..1	Reference to the business document that triggered the delivery of the goods.	WR 15-000314
Association	customerDocumentReference	Ecom_DocumentReference	0..1	Specifies document referenced by the customer, used e.g. for split orders.	WR 15-000314 WR 16-000068
Association	referencedConsignment	Ecom_ConsignmentIdentification	0..1	Reference to the identification of the consignment.	WR 15-000314
Association	costAccountingContact	Contact	0..*	Specifies a department name or reference corresponding to cost accounting.	WR 16-000060 WR 16-000061
Association		PackagingMarking	0..*	Details on the markings present on the packaging of the logistic unit.	WR 16-000100
Association	productCertification	Ecom_DocumentReference	0..1	Reference to a number assigned by a governing body (or their agents) to a product which certifies compliance with a standard.	WR 15-000314
Association	promotionalDeal	Ecom_DocumentReference	0..1	Reference to a number assigned by a vendor to a special promotion activity.	WR 15-000314
Association	contract	Ecom_DocumentReference	0..1	Reference to the contractual agreement under which the goods are delivered.	WR 15-000314
Association	specification	Ecom_DocumentReference	0..1	An essential technical requirement for items, materials or services, including the procedures to be used to determine whether the requirement has been met. Specifications may also include requirements for preservation, packaging, packing, and marking.	WR 15-000314
Association		DangerousGoodsInformation	0..1	Hazardous instructions applicable to delivered goods, such as where or how specified packages or containers are to be handled because of restriction from dangerous goods.	

Content	Attribute / Role	Datatype /Secondary class	Multiplicity	Definition	Requirements
Association	purchaseConditions	Ecom_DocumentReference	0..1	Reference to the business document that describes the commercial conditions under which the goods are delivered.	WR 15-000314
Association		DespatchAdviceQuantityVariance	0..*	Information with regards to any difference between what was ordered and what is ready for or has been despatched.	
Association	locationOfLastProcessing	LocationInformation	0..1	The name and address of the last processing location in which the trade item was processed or transformed.	
Association	locationOfOrigin	LocationInformation	0..1	The name and address of location of origin in which the goods have been produced or manufactured, according to criteria laid down for the purposes of application of the Customs tariff, of quantitative restrictions, or of any other measure related to trade.	
Association	deliveryNote	Ecom_DocumentReference	0..1	Reference to the physical document that accompanies the delivered goods.	WR 15-000314
Association	totalLineAmount	Amount	0..1	The value of the despatch products required for customs clearance procedures or the products, which price is not known by the buyer until it is sold further (e.g. at the auction).	WR 15-000038
Association		TransactionalTradeItem	1..1	The trade item identification of the goods that were delivered.	
Association	requestedItemIdentification	Ecom_TradeItemIdentification	0..1	The trade item identification of the goods that were ordered or planned to be delivered.	WR 15-000314
Association	customerReference	Ecom_DocumentReference	0..1	Reference to the end customer that will receive the goods.	MR3 renamed from customer WR 15-000314
Association		TransactionalGenericReference	0..*	Reference to an associated information in support of related business processes. E.g. any kind of internal reference, such as a cost center.	WR 16-000031

Content	Attribute / Role	Datatype /Secondary class	Multiplicity	Definition	Requirements
Association	customer	Ecom_PartyIdentification	0..1	Indicates a physical person or a legal entity that is the account holder. If used for cash handling process, the account of the customer will not be credited if the suspect bank note is detected at the bank branch.	WR 15-000314 WR 16-000247
Association	couponClearingHouse	Ecom_PartyIdentification	0..1	Identification of the Coupon Clearing House	WR 17-000311 – 17-000318
Association	itemOwner	Ecom_PartyIdentification	0..1	Indicates who is the owner of the Trade Item.	WR 17-000311 – 17-000318
Association	originalSupplier	Ecom_PartyIdentification	0..1	Identifies the original party from whom the goods being transacted were obtained	WR 17-000311 – 17-000318
Attribute	lineItemNumber	positiveInteger	1..1	Provides the line number associated to the Despatch Advice Line Item.	
Attribute	parentLineItemNumber	positiveInteger	0..1	The number of line item containing information about the parent of the current item. It allows establishing hierarchical link between the two items.	WR 14-000021 WR 14-000044
Attribute	despatchedQuantity	Quantity	1..1	The number of units shipped of the order unit or associated item. The unit of measure for the quantity is assumed to be the same as for the associated item. Thus the quantity must be specified in the same unit of measure as the item, e.g. case, each, etc...	MR3 renamed from quantityContained
Attribute	correspondingQuantity	Quantity	0..1	The quantity of trade item units corresponding to the despatched quantity of a variable measurement trade item.	WR 20-424
Attribute	countryOfLastProcessing	CountryCode	0..1	Code identifying the country in which the trade item was processed, transformed, or inspected last before its import.	
Attribute	countryOfOrigin	CountryCode	0..1	Code identifying the country in which the goods have been produced or manufactured, according to criteria laid down for the purposes of application of the customs tariff, of quantitative restrictions, or of any other measure related to trade.	

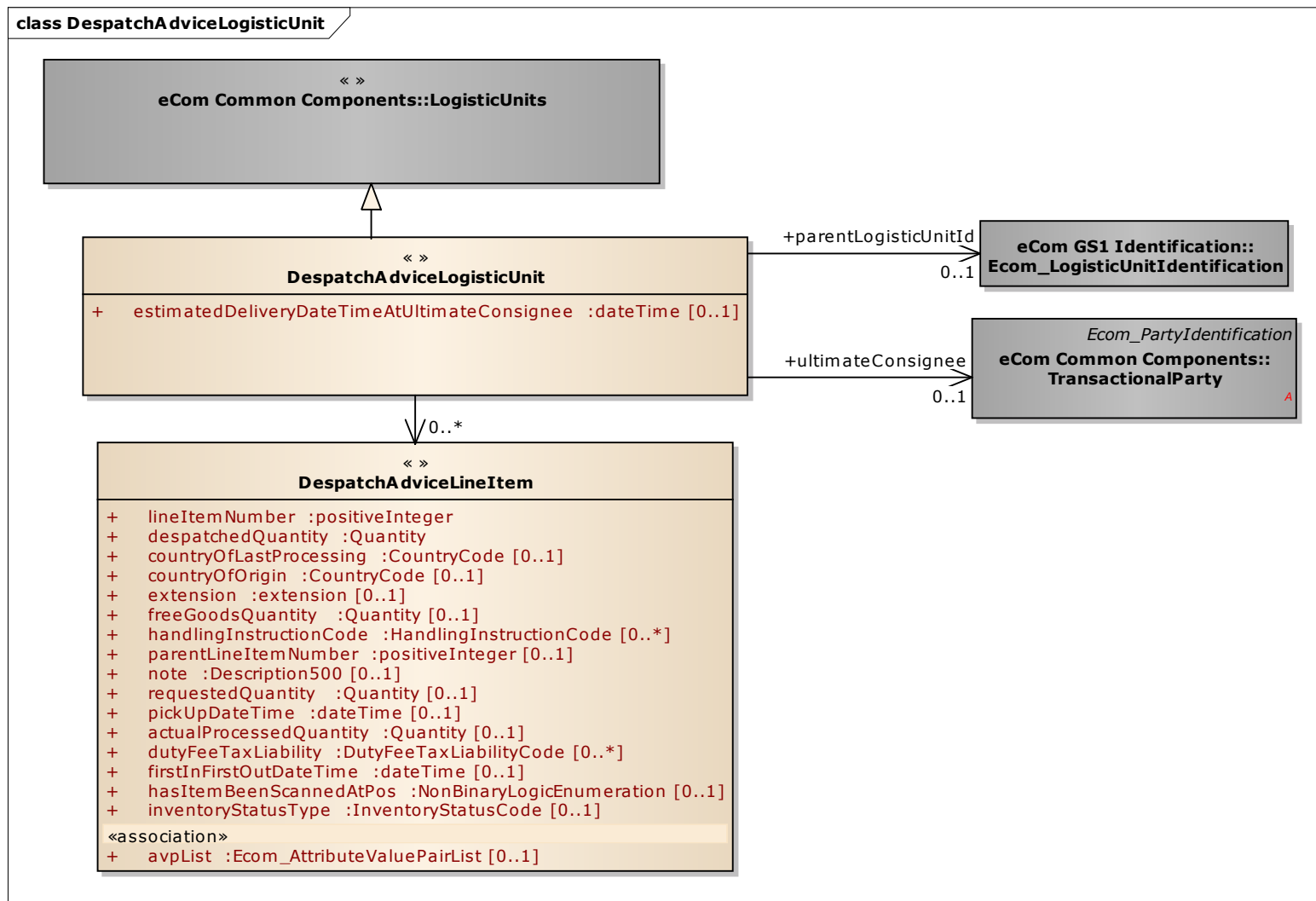
Content	Attribute / Role	Datatype /Secondary class	Multiplicity	Definition	Requirements
Attribute	extension	extension	0..1	Extension point for inclusion of context specific information, such as information specific to a particular type of product. Example: Extension for meat products.	
Attribute	freeGoodsQuantity	Quantity	0..1	The quantity of despatched goods which is free of charge.	
Attribute	handlingInstructionCode	HandlingInstructionCode	0..*	Code specifying an instruction applicable to the transport or storage of goods.	
Attribute	note	Description500	0..1	Free text used to convey information that is not processed by applications. Only meant to present the information to a user as on a screen, in a browser, etc.	BRAD RQ 09.236.F
Attribute	pickUpDateTime	dateTime	0..1	Date/time at which the items are picked up.	WR 16-000246
Attribute	requestedQuantity	Quantity	0..1	The quantity that was ordered or planned to be delivered.	
Attribute	avpList	Ecom_AttributeValue PairList	0..1	Temporary attributes introduced between minor versions.	WR 14-000110
Attribute	aqctualProcessedQuantity	Quantity	0..1	The actual quantity of variable measure goods (e.g. meat, fish, vegetable). This quantity is not known until it is processed, at which point it is measured.	WR 17-000311 – 17-000318
Attribute	dutyFeeTaxLiability	DutyFeeTaxLiabilityCode	0..*	Indicates whether an item is a subject to a particular duty, tax or fee.	WR 17-000311 – 17-000318
Attribute	hasItemBeenScannedAtPos	NonBinaryLogicEnumeration	0..1	Specifies whether the trade item has been scanned at the retail Point of Sale.	WR 17-000311 – 17-000318
Attribute	firstInFirstOutDateTime	dateTime	0..1	The date and time when the goods should be considered for the FIFO delivery.	WR 17-000311 – 17-000318
Attribute	inventoryStatusType	InventoryStatusCode	0..1	Code specifying the inventory status of the goods.	WR 17-000311 – 17-000318
DespatchAdviceQuantityVariance				Information with regards to any difference between what was ordered and what is ready for or has been despatched.	
Attribute	varianceReasonCode	VarianceReasonCode	1..1	Code specifying the reason for the change in the despatched quantity.;renamed from changeReason	



Content	Attribute / Role	Datatype /Secondary class	Multiplicity	Definition	Requirements
Attribute	varianceQuantity	Quantity	0..1	The quantitative difference between what was ordered and what is despatched.	
Attribute	deliveryDateVariance	date	0..1	The estimated delivery date for the goods that have been put on backorder.	
Attribute	firstDeliveryDateTime	dateTime	0..1	The earliest date at which the supplier can deliver the product to the trading partner.	WR 20-423
Attribute	remainingQuantityStatusCode	RemainingQuantityStatusCode	0..1	Code specifying the action that will be taken with respect to the goods that were not despatched. ; BRAD RQ09-233	

4.6 Despatch Advice Logistic Unit

Class Diagram



GDD Report

The content of the DespatchAdviceLogisticUnit class, its structure and component definitions can be accessed in the Global Data Dictionary:

http://apps.gs1.org/GDD/bms/Version3_4/Pages/bieDetails.aspx?semanticURN=urn:gs1:gdd:bie:DespatchAdviceLogisticUnit

Content	Attribute / Role	Datatype / Secondary class	Multiplicity	Definition	Requirements
DespatchAdviceLogisticUnit				Information on a logistic unit contained in the shipment.	
Association	ultimateConsignee	TransactionalParty	0..1	Identifies the party that is the final destination for the logistic unit.	MR3 integration of crossdock extension
Generalization		LogisticUnits			
Association		DespatchAdviceLineItem	0..*	Information on the trade items contained in the shipment.	
Association	parentLogisticUnitId	Ecom_LogisticUnitIdentification	0..1	Reference to the logistic unit that contains this logistic unit.	WR 16-000349
Attribute	estimatedDeliveryDate TimeAtUltimateConsignee	dateTime	0..1	The date and time the logistic unit is expected to be delivered at the ultimate consignee.	MR3 integration of crossdock extension



Note: Reference Shared Common Library Business Message (BMS) Release 3.5.1 and eCom Domain Common Library Business Message (BMS) Release 3.5.1 for all common information.

4.7 Enumerations (message specific)

Not applicable

4.8 Code Lists



Note: Refer to the Global Data Dictionary (GDD) for the code values.

Class	Codelist	Referenced in
DespatchAdvice	DeliveryTypeCode	http://apps.gs1.org/GDD/Pages/clDetails.aspx?semanticURN=urn:gs1:gdd:cl:DeliveryTypeCode
DespatchAdvice	DespatchAdviceTypeCode	
DespatchAdvice	ReferenceNumberTypeCode	http://apps.gs1.org/GDD/Pages/clDetails.aspx?semanticURN=urn:gs1:gdd:cl:ReferenceNumberTypeCode
DespatchAdviceTransportInformation	TransportModeCode	http://apps.gs1.org/GDD/Pages/clDetails.aspx?semanticURN=urn:gs1:gdd:cl:TransportModeCode
DespatchAdviceLineItem	CountryCode	http://apps.gs1.org/GDD/Pages/clDetails.aspx?semanticURN=urn:gs1:gdd:cl:CountryCode
DespatchAdviceLineItem	HandlingInstructionCode	http://apps.gs1.org/GDD/Pages/clDetails.aspx?semanticURN=urn:gs1:gdd:cl:HandlingInstructionCode
DespatchAdviceQuantityVariance	VarianceReasonCode	http://apps.gs1.org/GDD/Pages/clDetails.aspx?semanticURN=urn:gs1:gdd:cl:VarianceReasonCode
DespatchAdviceQuantityVariance	RemainingQuantityStatusCode	http://apps.gs1.org/GDD/Pages/clDetails.aspx?semanticURN=urn:gs1:gdd:cl:RemainingQuantityStatusCode



Note: Refer to the Global Data Dictionary (GDD) for the code values.

5 Business Message Examples

5.1 Example 1

It is an example of a despatch advice message, announcing the delivery of the ordered goods. The message is sent on April 11, 2011 09 AM. The message identification number is DA349875.

Party Information

GS1 Global Location Number	Party Type
5412345000013	Receiver
4098765000010	Shipper
5412345000037	Ship to

Referenced Purchase Order

Purchase Order PO3352, from Receiver (5412345000013), received on 11th of March 2011, Line Item 1

Despatch Information

Actual Ship Date Time: April 11, 2011 09:00 AM

Despatch Advice Logistic Line Item

Package Type: PE (Pallet, Modular)

Logistics Unit Identification SSCC 409876506700001010

Despatch Advice Item Containment Line Item

Country of Origin: Germany

Item GTIN: 40987650000278

Quantity: 48

Delivery Note References

Referenced Date Time: April 11, 2011 T 03:00 PM

Referenced Identification: DN123

Line Item Number: 1

Message Example 1

Attribute	Value
DespatchAdvice	
Document	
creationDateTime	2011-04-11 09:00
documentStatus	ORIGINAL
EntityIdentification (+despatchAdviceIdentification)	
entityIdentification	DA349875
PartyIdentification (+contentOwner)	
gln	4098765000010
TransactionalParty (+shipper)	
gln	4098765000010
TransactionalParty (+receiver)	

Attribute	Value
gLN	5412345000013
TransactionalParty (+shipTo)	
gln	5412345000037
DocumentReference (+purchaseOrder)	
lineNumber	1
creationDateTime	2011-03-11 11:00
EntityIdentification	
entityIdentification	PO3352
TransactionalParty (+contentOwner)	
gln	5412345000013
DespatchInformation	
actualShipDateTime	April 11, 2011 09:00
DespatchAdviceLogisticUnit	
LogisticUnits	
packageType	PE (pallet, modular)
LogisticUnitIdentification	
sscc	409876506700001010
DespatchAdviceLineItem	
lineItemNumber	1
despatchedQuantity	48
countryOfOrigin	DE
TransactionalTradeItemIdentification (+requestedItemIdentification)	
gtin	40987650000223
DocumentReference (+deliveryNote)	
lineItemNumber	001
referenceDateTime	2011-04-11 15:00
referenceIdentification	DN123

5.2 Example 2

It is an example of a Despatch Advice message, announcing the delivery of the ordered goods in a cross docking scenario. The message is sent on April 10, 2011 09 AM. The message identification number is DA349866.

Party Information

GS1 Global Location Number	Party Type
5412345000013	Receiver
4098765000010	Shipper
5420304050603	Cross docking centre (Ship To)
5412345000174	Buyer's store 1 (Ultimate Consignee 1)
5412345000228	Buyer's store 2 (Ultimate Consignee 2)

The Purchase Order PO3399, from Receiver (5412345000013), received on March 11th 2011. The Buyer requested the goods to be delivered to the cross docking centre (GLN 5420304050603), broken down into two packages each and delivered to two stores (referred to as Ultimate Consignees) that belong to the Buyer's company.

The Shipper (referred to as Seller in Order, GLN 4098765000010) announces the despatch of the requested goods to the cross docking centre (referred to as Ship To, GLN 5420304050603), from where they will be delivered to the Buyer's stores.

The Despatch Advice is created on 10th of April 2011 at 9:00 AM. The goods have been shipped at 9:15 AM. They are placed on one pallet that needs to be broken down.

Message Example 2

Attribute	Value
DespatchAdvice	
Document	
creationDateTime	2011-04-10 09:00
documentStatus	ORIGINAL
EntityIdentification (+despatchAdviceIdentification)	
entityIdentification	DA349866
PartyIdentification (+contentOwner)	
glN	4098765000010
TransactionalParty (+shipper)	
glN	4098765000010
TransactionalParty (+receiver)	
glN	5412345000013
TransactionalParty (+shipTo)	
glN	5420304050603
TransactionalParty (+inventoryLocation)	
glN	5412345000013
DocumentReference (+purchaseOrder)	
EntityIdentification	
entityIdentification	PO3399
PartyIdentification (+contentOwner)	
glN	5412345000013
DespatchAdviceTransportInformation	
DocumentReference (+billOfLadingNumber)	
creationDateTime	2011-04-10 08:45
entityIdentification	88021
DespatchInformation	
actualShipDateTime	2011-04-10 09:15
DespatchAdviceLogisticUnit *1	
LogisticUnits	
packageTypeCode	PE (pallet, modular)
LogisticUnitIdentification	
sscc	154123450987654329

Attribute	Value
estimatedDeliveryDateTimeAtUltimateConsignee	2011-04-11 06:30
TransactionalParty (+ultimateConsignee)	
gln	5412345000174
DespatchAdviceLineItem *1.1	
DespatchAdviceLineItem	
lineItemNumber	1
despatchedQuantity	20
TradeItemIdentification (+requestedItemIdentification)	
gtin	40987650000346
TransactionalItemData	
lotNumber	ASD00012
bestBeforeDate	2012-08-01
DocumentReference (+purchaseOrder)	
lineItemNumber	2
creationDateTime	2011-03-11 11:00
EntityIdentification	
referenceIdentification	PO3399
DespatchAdviceLogisticUnit *2	
LogisticUnits	
packageTypeCode	PE (pallet, modular)
LogisticUnitIdentification	
sscc	154123450987654329
estimatedDeliveryDateTimeAtUltimateConsignee	2011-04-11 08:15
TransactionalParty (+ultimateConsignee)	
gln	5412345000228
DespatchAdviceLineItem *2.1	
lineItemNumber	2
despatchedQuantity	4
TradeItemIdentification (+requestedItemIdentification)	
gtin	40987650000346
TransactionalItemData	
lotNumber	ASD00012
bestBeforeDate	2012-08-01
DocumentReference (+purchaseOrder)	
lineItemNumber	2
creationDateTime	2011-03-11 11:00

Attribute	Value
EntityIdentification	
referenceIdentification	PO3399

6 Implementation Considerations

6.1 User Guide

The Functional User Guide contains more information about the structure and content of the message: http://www.gs1.org/docs/ecom/xml/3/3.4/eCom-Trade_messages.html#DespatchAdvice

6.2 Message Specific Considerations

6.2.1 Document referencing

The Despatch Advice should include the line sequence numbers from the documents (Purchase Order and Purchase Conditions) that can be referenced to. These line sequence numbers for referenced documents are optional.

The idea behind this is that if a despatch advice refers to one order or contract or despatch note or consignment note the reference is identified at the header level and that then applies to all item lines.

If a despatch advice is referring to more than one order or contract or despatch note or consignment note then the reference is identified at the detail level through the DetailLevelReference.

Table below illustrates references.

Despatch Advice Line Number	Reference Identification and Date	Referenced Line Number
1	Purchase Order 933, Date 2007-04-12	25
2	Purchase Order 934, Date 2007-05-12	9
3	Purchase Order 990, Date 2007-06-12	1

6.2.2 Packaging hierarchy

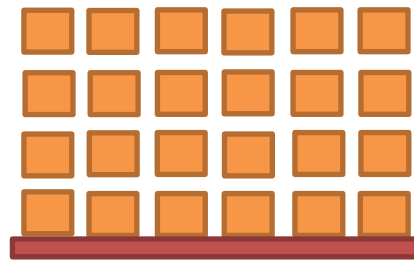
The examples below show how the logistic unit hierarchy can be represented in the Despatch Advice message.

Case 1: Simple hierarchy

24 Trade Items are placed on one pallet.

Pallet SSCC: 387186978600000106

GTIN of Trade Items placed on Pallet 1: 38718697864524



Pallet 1

The Pallet identification and its content should be represented the following way in the despatchAdviceLogisticUnit:

```
<despatchAdviceLogisticUnit>
  <levelIdentification>1</levelIdentification>
  <packageTypeCode>PX</packageTypeCode>
  <childPackageTypeCode>CT</childPackageTypeCode>
  <quantityOfChildren>24</quantityOfChildren>
  <logisticUnitIdentification>
    <sscc>387186978600000106</sscc>
  </logisticUnitIdentification>
  <despatchAdviceLineItem>
    <lineItemNumber>1</lineItemNumber>
    <despatchedQuantity>24</despatchedQuantity>
    <transactionalTradeItem>
      <gtin>38718697864524</gtin>
    </transactionalTradeItem>
  </despatchAdviceLineItem>
</despatchAdviceLogisticUnit>
```

Case 2: Complex hierarchy

2 cases are placed on one pallet.

Pallet SSCC: 387186978600000113

SSCC of Case 1 placed directly on the pallet: 387186978600000120

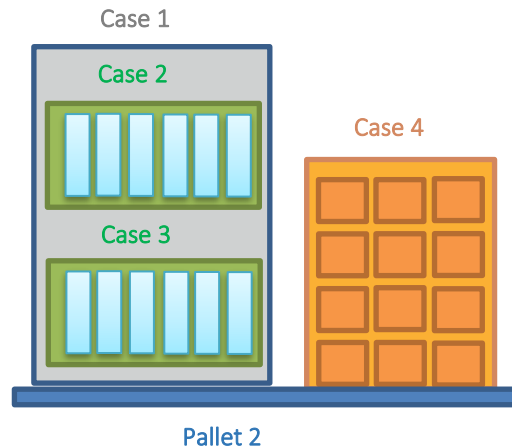
SSCC of Case 2 placed in case 1: 387186978600000137

SSCC of Case 3 placed in case 1: 387186978600000144

GTIN of Trade Items placed in Cases 2 and 3: 38718697864784

SSCC of Case 4 placed directly on the pallet: 387186978600000328

GTIN of Trade Items placed in Case 4: 38718697864524



The Pallet identification and its content should be represented the following way in the despatchAdviceLogisticUnit:

Pallet:

```
<despatchAdviceLogisticUnit>
  <levelIdentification>1</levelIdentification>
  <packageTypeCode>PX</packageTypeCode>
  <quantityOfLogisticUnits>1</quantityOfLogisticUnits>
  <childPackageTypeCode>CS</childPackageTypeCode>
  <quantityOfChildren>1</quantityOfChildren>
  <logisticUnitIdentification>
    <sscc>387186978600000113</sscc>
  </logisticUnitIdentification>
</despatchAdviceLogisticUnit>
```

Case 1:

```
<despatchAdviceLogisticUnit>
  <levelIdentification>2</levelIdentification>
  <parentLevelIdentification>387186978600000113</parentLevelIdentification>
  <packageTypeCode>CS</packageTypeCode>
  <childPackageTypeCode>CS</childPackageTypeCode>
  <quantityOfChildren>2</quantityOfChildren>
  <logisticUnitIdentification>
    <sscc>387186978600000120</sscc>
  </logisticUnitIdentification>
</despatchAdviceLogisticUnit>
```

Case 2:

```
<despatchAdviceLogisticUnit>
  <levelIdentification>3</levelIdentification>
  <parentLevelIdentification>387186978600000120</parentLevelIdentification>
  <packageTypeCode>CS</packageTypeCode>
  <childPackageTypeCode>CT</childPackageTypeCode>
  <quantityOfChildren>6</quantityOfChildren>
  <logisticUnitIdentification>
    <sscc>387186978600000137</sscc>
  </logisticUnitIdentification>
  <despatchAdviceLineItem>
    <lineItemNumber>1</lineItemNumber>
    <despatchedQuantity>6</despatchedQuantity>
    <transactionalTradeItem>
```

```

        <gtin>38718697864784</gtin>
      </transactionalTradeItem>
    </despatchAdviceLineItem>
  </despatchAdviceLogisticUnit>

```

Case 3:

```

<despatchAdviceLogisticUnit>
  <levelIdentification>3</levelIdentification>
<parentLevelIdentification>387186978600000120</parentLevelIdentification>
  <packageTypeCode>CS</packageTypeCode>
  <childPackageTypeCode>CT</childPackageTypeCode>
  <quantityOfChildren>6</quantityOfChildren>
  <logisticUnitIdentification>
    <sscc>387186978600000144</sscc>
  </logisticUnitIdentification>
  <despatchAdviceLineItem>
    <lineItemNumber>1</lineItemNumber>
    <despatchedQuantity>6</despatchedQuantity>
    <transactionalTradeItem>
      <gtin>38718697864784</gtin>
    </transactionalTradeItem>
  </despatchAdviceLineItem>
</despatchAdviceLogisticUnit>

```

Case 4:

```

<despatchAdviceLogisticUnit>
  <levelIdentification>2</levelIdentification>
<parentLevelIdentification>387186978600000113</parentLevelIdentification>
  <packageTypeCode>CS</packageTypeCode>
  <childPackageTypeCode>CT</childPackageTypeCode>
  <quantityOfChildren>15</quantityOfChildren>
  <logisticUnitIdentification>
    <sscc>387186978600000328</sscc>
  </logisticUnitIdentification>
  <despatchAdviceLineItem>
    <lineItemNumber>1</lineItemNumber>
    <despatchedQuantity>15</despatchedQuantity>
    <transactionalTradeItem>
      <gtin>38718697864524</gtin>
    </transactionalTradeItem>
  </despatchAdviceLineItem>
</despatchAdviceLogisticUnit>

```


7 Summary of Changes

Any change in the GS1 standards is done based on the Work Request (WR) submitted by the GS1 User Companies or Member Organisations. All Work Requests are documented in the Work Request system available on the GS1 website: <http://wr.gs1.org>. The system is accessible to registered users. New visitors need to register first, to be able to access it. WRs can be searched by the number referenced in tables below, see: Search Work Requests. The number starts with the two last digits of the year when it was submitted, followed by the consecutive number within that year.



Note: WRs submitted earlier than February 2012 should be searched in Old Change Requests.

7.1 BMS Release 3.0

Change	Associated CR Number
Incorporated Cross Dock Extension into the message itself.	09-000233
Added elements corresponding to the Current requirements queue	09-000235
Updated the GDD Reports and Class diagrams	09-000236
Updated the Business Example and test data sections	09-000238
Added the architectural principles section.	09-000240
Updated the introduction and use cases.	10-000068
Updates for TSD Development: Removed 2 nd DespatchInformation in example as it can only occur once according to the model. Removed redundant information of prior to MR3 from Summary of Changes and Document Change History	n/a
Updates for BMS Public Review: - removed association from DespatchAdvice to DespatchAdviceLineItem, in order to have only one path to the line item (via DespatchAdviceLogisticUnit). - added attribute deliveryTypeCode to the root class.	n/a
Updates for BMS Publication (3.0) <ul style="list-style-type: none"> Updated date of document Clean-up of Document Change History Removed year form copyright statement in footer Corrected spelling of Section 11 Architectural Principles Corrected example (enityIdentification) Corrected case of GS1 keys in example Removed orphan sentence fragment "The reported despatch consists of" in section 6.2 example 	n/a

7.2 BMS Release 3.1

Change	Associated CR Number
<div> <div>class DespatchAdvice - maintenance view</div> <div> <div>«root, » DespatchAdvice</div> <div> + deliveryTypeCode: DeliveryTypeCode [0..1] + note: Description500 [0..1] </div> <div> maintenance Change: (Verified) 3.1 added +buyer (BRAD WIO-DA-1) Change: (Verified) 3.1 added +seller (BRAD WIO-DA-2) </div> </div> </div>	BRAD WIO-DA-1, 2
Updated SSCC number in examples.	

7.3 BMS Release 3.2

Change	Associated WR
<div>Added Attribute Value Pair at the root, line item and sub line item levels</div> <div> <div>class DespatchAdvice - maintenance view</div> <div> <div>«root, » DespatchAdvice</div> <div> + deliveryTypeCode :DeliveryTypeCode [0..1] + note :Description500 [0..1] </div> <div> maintenance Change: (Complete) 3.1 added +buyer (BRAD WIO-DA-1) Change: (Complete) 3.1 added +seller (BRAD WIO-DA-2) Change: (Verified) 3.2 changed generalisation from Document to eComDocument class to include AVP (WR 14-110) </div> </div> </div>	14-000110

Change	Associated WR
<ul style="list-style-type: none"> ■ Add to warehousing messages carrier track and trace information with: package tracking number and carrier track and trace URL (WR 13-106) ■ Added identification of (WR 13-203): <ul style="list-style-type: none"> □ Route □ transportMeansName □ Receiver – Contact □ Driver – Contact <div> class DespatchAdviceTransportInformation - maintenance view <div> « » DespatchAdviceTransportInformation <div> + transportMeansID :Identifier [0..1] + transportMeansName :string [0..1] = {1..80} + transportModeCode :TransportModeCode [0..1] + routeID :Identifier [0..1] </div> <div> <i>maintenance</i> Change: (Verified) 3.2 added +routeID (WR 13-203) Change: (Verified) 3.2 added +transportMeansName (WR 13-203) Change: (Verified) 3.2 added association to CarrierTrackAndTraceInformation (WR 13-106) Change: (Verified) 3.2 added association to Contact class with role name +driver (WR 13-203) Change: (Verified) 3.2 added association to Contact class with role name +receiver (WR 13-203) </div> </div> </div>	13-000106 13-000203
<ul style="list-style-type: none"> ■ Added a reference to parent line number to all LineItem classes, to support hierarchical items (WRs 14-021 & 14-044) ■ Added Attribute Value Pair at the root, line item and sub line item levels (WR 14-110) <div> class DespatchAdviceLineItem - maintenance view <div> « » DespatchAdviceLineItem <div> + lineItemNumber :positiveInteger + despatchedQuantity :Quantity + countryOfLastProcessing :CountryCode [0..1] + countryOfOrigin :CountryCode [0..1] + extension :extension [0..1] + freeGoodsQuantity :Quantity [0..1] + handlingInstructionCode :HandlingInstructionCode [0..*] + parentLineItemNumber :positiveInteger [0..1] + note :Description500 [0..1] + requestedQuantity :Quantity [0..1] + «association» avpList :Ecom_AttributeValuePairList [0..1] </div> <div> <i>maintenance</i> Change: (Verified) 3.2 added +avpList (WR 14-110) Change: (Verified) 3.2 added +parentLineItemNumber (WR 14-021 & 14-044) </div> </div> </div>	14-000021 14-000044 14-000110

Change	Associated WR
<ul style="list-style-type: none"> Added to warehousing messages carrier track and trace information with: package tracking number and carrier track and trace URL.(WR 13-106) Added GIAI identifier in Despatch Advice Logistic Unit (WR 13-204) Added package quantity at despatchAdviceLogisticUnit level (WR 14-084) Added Attribute Value Pair at the root, line item and sub line item levels (WR 14-110) 	13-000106 13-000204 14-000084 14-000110
<div> <div>class DespatchAdviceLogisticUnit - maintenance view</div> <div> <div>« »</div> <div>eCom Common Components::LogisticUnits</div> <div>maintenance</div> <div> Change: (Complete) 3.1 added association to ReturnablePackaging (WR 12-199) Change: (Verified) 3.2 added +avpList (WR 14-110) Change: (Verified) 3.2 added +quantityOfLogisticUnits (WR 14-084) Change: (Verified) 3.2 added association to CarrierTrackAndTraceInformation (WR 13-106) Change: (Verified) 3.2 added association to IndividualAssetIdentification (WR 13-204) </div> </div> <div> <div>« »</div> <div>DespatchAdviceLogisticUnit</div> <div>+ estimatedDeliveryDateTimeAtUltimateConsignee: dateTime [0..1]</div> </div> </div>	

7.4 BMS Release 3.3

Change	Associated WR
<ul style="list-style-type: none"> Created Ecom_DocumentReference class and changed association from the previous DocumentReference (WR 15-314) 	15-000314 16-000024
<ul style="list-style-type: none"> added association to Ecom_DocumentReference named +blanketOrder (WR 16-024) 	16-000068 16-000084
<ul style="list-style-type: none"> added association to Ecom_DocumentReference named +customerDocumentReference (WR 16-068) 	16-000085 16-000086
<ul style="list-style-type: none"> added association to Ecom_DocumentReference named +transportInstruction (WR 16-084) 	16-000087 16-000088
<ul style="list-style-type: none"> added association to Ecom_DocumentReference named +splitDeliveryReference (WR 16-085) 	16-000089 16-000090
<ul style="list-style-type: none"> added association to Ecom_DocumentReference named +deliverySchedule (WR 16-086) 	
<ul style="list-style-type: none"> added association to Ecom_DocumentReference named +invoice (WR 16-087) 	
<ul style="list-style-type: none"> added association to Ecom_DocumentReference named +promotionalDeal (WR 16-088) 	
<ul style="list-style-type: none"> added association to Ecom_DocumentReference named +orderResponse (WR 16-089) 	
<ul style="list-style-type: none"> added association to Ecom_DocumentReference named +returnsInstruction (WR 16-090) 	

class DespatchAdvice - maintenance view

eCom Common Components::Ecom_DocumentReference
maintenance
Change: (New) 3.3 added +referencedDocumentUri (WR 16-261)
Change: (New) 3.3 New class (WR 15-314)

+deliveryNote
0..1
+purchaseOrder
0..1
+blanketOrder
0..1
+orderResponse
0..1
+contract
0..1
+declarantsCustomsIdentity
0..1
+productCertification
0..1
+specification
0..1
+purchaseConditions
0..1
+promotionalDeal
0..1
+customerDocumentReference
0..1
+transportInstruction
0..1
+returnsInstruction
0..1
+deliverySchedule
0..1
+invoice
0..1

<root>
DespatchAdvice
+ deliveryTypeCode :DeliveryTypeCode [0..1]
+ rackDAIPickUpLocation :string [0..1] = (1..35)
+ totalDepositAmount :Amount [0..1]
+ note :Description500 [0..1]
maintenance
Change: (Complete) 3.1 added +buyer (BRAD WIO-DA-1)
Change: (Complete) 3.1 added +seller (BRAD WIO-DA-2)
Change: (Complete) 3.2 changed generalisation from Document to eComDocument class to include AVP (WR 14-110)
Change: (New) 3.3 added +rackDAIPickUpLocation (WR 16-095)
Change: (New) 3.3 added +totalDepositAmount (WR 16-245)
Change: (New) 3.3 added association to DocumentReference named +blanketOrder (WR 16-024)
Change: (New) 3.3 added association to DocumentReference named +customerDocumentReference (WR 16-068)
Change: (New) 3.3 added association to DocumentReference named +deliverySchedule (WR 16-086)
Change: (New) 3.3 added association to DocumentReference named +invoice (WR 16-087)
Change: (New) 3.3 added association to DocumentReference named +orderResponse (WR 16-089)
Change: (New) 3.3 added association to DocumentReference named +promotionalDeal (WR 16-088)
Change: (New) 3.3 added association to DocumentReference named +returnsInstruction (WR 16-090)
Change: (New) 3.3 added association to DocumentReference named +splitDeliveryReference (WR 16-085)
Change: (New) 3.3 added association to DocumentReference named +transportInstruction (WR 16-084)
Change: (New) 3.3 added association to EndCustomerRelatedDetails (WR 16-093)
Change: (New) 3.3 added association to ReferenceNumber class (WR 16-031, 069, 079)
Change: (New) 3.3 added association to TransactionalParty named +freightForwarder (WR 16-094)
Change: (New) 3.3 added association to TransactionalParty named +invoice (WR 16-091)
Change: (New) 3.3 added association to TransactionalParty named +logisticServiceProvider (WR 16-092)
Change: (New) 3.3 changed association from EntityIdentification to Ecom_EntityIdentification (WR 15-314)
Change: (New) 3.3 changed associations from DocumentReference to Ecom_DocumentReference (WR 15-314)

Change	Associated WR
<p>Created Ecom_EntityIdentification class and changed association from the previous EntityIdentification</p> <pre> class DespatchAdvice - maintenance view «root, » DespatchAdvice + deliveryTypeCode :DeliveryTypeCode [0..1] + rackIDatPickUpLocation :string [0..*] = {1..35} + totalDepositAmount :Amount [0..1] + note :Description500 [0..1] maintenance Change: (Complete) 3.1 added +buyer (BRAD WIO-DA-1) Change: (Complete) 3.1 added +seller (BRAD WIO-DA-2) Change: (Complete) 3.2 changed generalisation from Document to eComDocument class to include AVP (WR 14-110) Change: (New) 3.3 added +rackIDatPickUpLocation (WR 16-099) Change: (New) 3.3 added +totalDepositAmount (WR 16-245) Change: (New) 3.3 added association to Ecom_DocumentReference named +blanketOrder (WR 16-024) Change: (New) 3.3 added association to Ecom_DocumentReference named +customerDocumentReference (WR 16-068) Change: (New) 3.3 added association to Ecom_DocumentReference named +deliverySchedule (WR 16-086) Change: (New) 3.3 added association to Ecom_DocumentReference named +invoice (WR 16-087) Change: (New) 3.3 added association to Ecom_DocumentReference named +orderResponse (WR 16-089) Change: (New) 3.3 added association to Ecom_DocumentReference named +promotionalDeal (WR 16-088) Change: (New) 3.3 added association to Ecom_DocumentReference named +returnsInstruction (WR 16-090) Change: (New) 3.3 added association to Ecom_DocumentReference named +splitDeliveryReference (WR 16-085) Change: (New) 3.3 added association to Ecom_DocumentReference named +transportInstruction (WR 16-084) Change: (New) 3.3 added association to EndCustomerRelatedDetails (WR 16-093) Change: (New) 3.3 added association to ReferenceNumber class (WR 16-031, 069, 079) Change: (New) 3.3 added association to TransactionalParty named +freightForwarder (WR 16-094) Change: (New) 3.3 added association to TransactionalParty named +invoicee (WR 16-091) Change: (New) 3.3 added association to TransactionalParty named +logisticServiceProvider (WR 16-092) Change: (New) 3.3 changed association from EntityIdentification to Ecom_EntityIdentification (WR 15-314) Change: (New) 3.3 changed associations from DocumentReference to Ecom_DocumentReference (WR 15-314) </pre> <p> eCom GS1 Identification:: Ecom_EntityIdentification maintenance Change: (New) 3.3 New class (WR 15-314) </p> <p>+despatchAdviceIdentification 1..1</p>	15-000314

Change	Associated WR
<ul style="list-style-type: none"> added +rackIDatPickUpLocation (WR 16-099) added +totalDepositAmount (WR 16-245) <div> class DespatchAdvice - maintenance view <div> <div> «root, » DespatchAdvice </div> <div> + deliveryTypeCode :DeliveryTypeCode [0..1] + rackIDatPickUpLocation :string [0..*] = {1..35} + totalDepositAmount :Amount [0..1] + note :Description500 [0..1] </div> <div> maintenance Change: (Complete) 3.1 added +buyer (BRAD WIO-DA-1) Change: (Complete) 3.1 added +seller (BRAD WIO-DA-2) Change: (Complete) 3.2 changed generalisation from Document to eComDocument class to include AVP (WR 14-110) Change: (New) 3.3 added +rackIDatPickUpLocation (WR 16-099) Change: (New) 3.3 added +totalDepositAmount (WR 16-245) Change: (New) 3.3 added association to DocumentReference named +blanketOrder (WR 16-024) Change: (New) 3.3 added association to DocumentReference named +customerDocumentReference (WR 16-068) Change: (New) 3.3 added association to DocumentReference named +deliverySchedule (WR 16-086) Change: (New) 3.3 added association to DocumentReference named +invoice (WR 16-087) Change: (New) 3.3 added association to DocumentReference named +orderResponse (WR 16-089) Change: (New) 3.3 added association to DocumentReference named +promotionalDeal (WR 16-088) Change: (New) 3.3 added association to DocumentReference named +returnsInstruction (WR 16-090) Change: (New) 3.3 added association to DocumentReference named +splitDeliveryReference (WR 16-085) Change: (New) 3.3 added association to DocumentReference named +transportInstruction (WR 16-084) Change: (New) 3.3 added association to EndCustomerRelatedDetails (WR 16-093) Change: (New) 3.3 added association to ReferenceNumber class (WR 16-031, 069, 079) Change: (New) 3.3 added association to TransactionalParty named +freightForwarder (WR 16-094) Change: (New) 3.3 added association to TransactionalParty named +invoicee (WR 16-091) Change: (New) 3.3 added association to TransactionalParty named +logisticServiceProvider (WR 16-092) Change: (New) 3.3 changed association from EntityIdentification to Ecom_EntityIdentification (WR 15-314) Change: (New) 3.3 changed associations from DocumentReference to Ecom_DocumentReference (WR 15-314) </div> </div> </div>	16-000099 16-000245
<p>Created class EndCustomerDetails and associated it to the DespatchAdvice class</p> <div> class DespatchAdvice - maintenance view <div> <div> «root, » DespatchAdvice </div> <div> + deliveryTypeCode :DeliveryTypeCode [0..1] + rackIDatPickUpLocation :string [0..*] = {1..35} + totalDepositAmount :Amount [0..1] + note :Description500 [0..1] </div> <div> maintenance Change: (Complete) 3.1 added +buyer (BRAD WIO-DA-1) Change: (Complete) 3.1 added +seller (BRAD WIO-DA-2) Change: (Complete) 3.2 changed generalisation from Document to eComDocument class to include AVP (WR 14-110) Change: (New) 3.3 added +rackIDatPickUpLocation (WR 16-099) Change: (New) 3.3 added +totalDepositAmount (WR 16-245) Change: (New) 3.3 added association to DocumentReference named +blanketOrder (WR 16-024) Change: (New) 3.3 added association to DocumentReference named +customerDocumentReference (WR 16-068) Change: (New) 3.3 added association to DocumentReference named +deliverySchedule (WR 16-086) Change: (New) 3.3 added association to DocumentReference named +invoice (WR 16-087) Change: (New) 3.3 added association to DocumentReference named +orderResponse (WR 16-089) Change: (New) 3.3 added association to DocumentReference named +promotionalDeal (WR 16-088) Change: (New) 3.3 added association to DocumentReference named +returnsInstruction (WR 16-090) Change: (New) 3.3 added association to DocumentReference named +splitDeliveryReference (WR 16-085) Change: (New) 3.3 added association to DocumentReference named +transportInstruction (WR 16-084) Change: (New) 3.3 added association to EndCustomerRelatedDetails (WR 16-093) Change: (New) 3.3 added association to ReferenceNumber class (WR 16-031, 069, 079) Change: (New) 3.3 added association to TransactionalParty named +freightForwarder (WR 16-094) Change: (New) 3.3 added association to TransactionalParty named +invoicee (WR 16-091) Change: (New) 3.3 added association to TransactionalParty named +logisticServiceProvider (WR 16-092) Change: (New) 3.3 changed association from EntityIdentification to Ecom_EntityIdentification (WR 15-314) Change: (New) 3.3 changed associations from DocumentReference to Ecom_DocumentReference (WR 15-314) </div> </div> <div> eCom Common Components::TransactionalParty:: EndCustomerRelatedDetails maintenance Change: (New) 3.3 new class (WR 15-282, 16-093, 16-306) </div> </div>	16-000093

Change	Associated WR
<p>Created class TransactionalGenericReference and associated it to the DespatchAdvice class</p> <p>class DespatchAdvice - maintenance view</p> <p>Change: (Complete) 3.1 added +buyer (BRAD WIO-DA-1) Change: (Complete) 3.1 added +seller (BRAD WIO-DA-2) Change: (Complete) 3.2 changed generalisation from Document to eComDocument class to include AVP (WR 14-110) Change: (New) 3.3 added +rackDataPickUpLocation (WR 16-099) Change: (New) 3.3 added +totalDepositAmount (WR 16-245) Change: (New) 3.3 added association to Ecom_DocumentReference named +blanketOrder (WR 16-024) Change: (New) 3.3 added association to Ecom_DocumentReference named +customerDocumentReference (WR 16-068) Change: (New) 3.3 added association to Ecom_DocumentReference named +deliverySchedule (WR 16-086) Change: (New) 3.3 added association to Ecom_DocumentReference named +invoice (WR 16-087) Change: (New) 3.3 added association to Ecom_DocumentReference named +orderResponse (WR 16-089) Change: (New) 3.3 added association to Ecom_DocumentReference named +promotionalDeal (WR 16-088) Change: (New) 3.3 added association to Ecom_DocumentReference named +returnInstruction (WR 16-090) Change: (New) 3.3 added association to Ecom_DocumentReference named +splitDeliveryReference (WR 16-085) Change: (New) 3.3 added association to Ecom_DocumentReference named +transportInstruction (WR 16-084) Change: (New) 3.3 added association to EndCustomerRelatedDetails (WR 16-093) Change: (New) 3.3 added association to TransactionalGenericReference class (WR 16-031, 069, 079) Change: (New) 3.3 added association to TransactionalParty named +freightForwarder (WR 16-094) Change: (New) 3.3 added association to TransactionalParty named +invoicee (WR 16-091) Change: (New) 3.3 added association to TransactionalParty named +logisticServiceProvider (WR 16-092) Change: (New) 3.3 changed association from EntityIdentification to Ecom_EntityIdentification (WR 15-314) Change: (New) 3.3 changed associations from DocumentReference to Ecom_DocumentReference (WR 15-314)</p>	16-000031 16-000069 16-000079 16-000083
<ul style="list-style-type: none"> added association to TransactionalParty named +invoicee (WR 16-091) added association to TransactionalParty named +logisticServiceProvider (WR 19-092) added association to TransactionalParty named +freightforwarder (WR 16-094) <p>class DespatchAdvice - maintenance view</p> <p>Change: (Complete) 3.1 added +buyer (BRAD WIO-DA-1) Change: (Complete) 3.1 added +seller (BRAD WIO-DA-2) Change: (Complete) 3.2 changed generalisation from Document to eComDocument class to include AVP (WR 14-110) Change: (New) 3.3 added +rackDataPickUpLocation (WR 16-099) Change: (New) 3.3 added +totalDepositAmount (WR 16-245) Change: (New) 3.3 added association to DocumentReference named +blanketOrder (WR 16-024) Change: (New) 3.3 added association to DocumentReference named +customerDocumentReference (WR 16-068) Change: (New) 3.3 added association to DocumentReference named +deliverySchedule (WR 16-086) Change: (New) 3.3 added association to DocumentReference named +invoice (WR 16-087) Change: (New) 3.3 added association to DocumentReference named +orderResponse (WR 16-089) Change: (New) 3.3 added association to DocumentReference named +promotionalDeal (WR 16-088) Change: (New) 3.3 added association to DocumentReference named +returnInstruction (WR 16-090) Change: (New) 3.3 added association to DocumentReference named +splitDeliveryReference (WR 16-085) Change: (New) 3.3 added association to DocumentReference named +transportInstruction (WR 16-084) Change: (New) 3.3 added association to ReferenceNumber class (WR 16-031, 069, 079) Change: (New) 3.3 added association to TransactionalParty named +freightForwarder (WR 16-094) Change: (New) 3.3 added association to TransactionalParty named +invoicee (WR 16-091) Change: (New) 3.3 added association to TransactionalParty named +logisticServiceProvider (WR 16-092) Change: (New) 3.3 changed association from EntityIdentification to Ecom_EntityIdentification (WR 15-314) Change: (New) 3.3 changed associations from DocumentReference to Ecom_DocumentReference (WR 15-314)</p>	16-000091 16-000092 16-000094

Change	Associated WR
<p>Added +pickUpTime (WR 246)</p> <div> class DespatchAdviceLineItem - maintenance view <div> <div> « » DespatchAdviceLineItem </div> <div> + lineItemNumber :positiveInteger + parentLineItemNumber :positiveInteger [0..1] + despatchedQuantity :Quantity + countryOfLastProcessing :CountryCode [0..1] + countryOfOrigin :CountryCode [0..1] + extension :extension [0..1] + freeGoodsQuantity :Quantity [0..1] + handlingInstructionCode :HandlingInstructionCode [0..*] + note :Description500 [0..1] + pickUpDateTime :dateTime [0..1] + requestedQuantity :Quantity [0..1] «association» + avpList :Ecom_AttributeValuePairList [0..1] </div> <div> maintenance </div> </div> </div> <p>Change: (Complete) 3.2 added +avpList (WR 14-110) Change: (Complete) 3.2 added +parentLineItemNumber (WR 14-021 & 14-044) Change: (New) 3.3 added +pickUpDateTime (WR 16-246) Change: (New) 3.3 added association to Amount named +totalLineAmount (WR 15-038) Change: (New) 3.3 added association to Contact named +costAccountingContact (WR 16-060 & 061) Change: (New) 3.3 added association to Ecom_DocumentReference named +customerDocumentReference (WR 16-068) Change: (New) 3.3 added association to Ecom_PartyIdentification named +customer (WR 16-247) Change: (New) 3.3 added association to PackagingMarking (WR 16-100) Change: (New) 3.3 added association to the TransactionalGenericReference (WR 16-031) Change: (New) 3.3 changed association from ConsignmentIdentification to Ecom_ConsignmentIdentification (WR 15-314) Change: (New) 3.3 changed association from TradeItemIdentification to Ecom_TradeItemIdentification (WR 15-314) Change: (New) 3.3 changed associations from DocumentReference to Ecom_DocumentReference (WR 15-314)</p>	16-000246
<p>Added association to Amount named +totalLineAmount (WR 15-038)</p> <div> class DespatchAdviceLineItem - maintenance view <div> <div> « » DespatchAdviceLineItem </div> <div> + lineItemNumber :positiveInteger + parentLineItemNumber :positiveInteger [0..1] + despatchedQuantity :Quantity + countryOfLastProcessing :CountryCode [0..1] + countryOfOrigin :CountryCode [0..1] + extension :extension [0..1] + freeGoodsQuantity :Quantity [0..1] + handlingInstructionCode :HandlingInstructionCode [0..*] + note :Description500 [0..1] + pickUpDateTime :dateTime [0..1] + requestedQuantity :Quantity [0..1] «association» + avpList :Ecom_AttributeValuePairList [0..1] </div> <div> maintenance </div> </div> </div> <div> «dataType» float Shared Compound Data Types: Amount </div> <p>+totalLineAmount 0..1</p> <p>Change: (Complete) 3.2 added +avpList (WR 14-110) Change: (Complete) 3.2 added +parentLineItemNumber (WR 14-021 & 14-044) Change: (New) 3.3 added +pickUpDateTime (WR 16-246) Change: (New) 3.3 added association to Amount named +totalLineAmount (WR 15-038) Change: (New) 3.3 added association to Contact named +costAccountingContact (WR 16-060 & 061) Change: (New) 3.3 added association to Ecom_DocumentReference named +customerDocumentReference (WR 16-068) Change: (New) 3.3 added association to Ecom_PartyIdentification named +customer (WR 16-247) Change: (New) 3.3 added association to PackagingMarking (WR 16-100) Change: (New) 3.3 added association to the TransactionalGenericReference (WR 16-031) Change: (New) 3.3 changed association from ConsignmentIdentification to Ecom_ConsignmentIdentification (WR 15-314) Change: (New) 3.3 changed association from TradeItemIdentification to Ecom_TradeItemIdentification (WR 15-314) Change: (New) 3.3 changed associations from DocumentReference to Ecom_DocumentReference (WR 15-314)</p>	15-000038

Change	Associated WR
<p>Added association to Contact named +costAccountingContact (WRs 15-060, 061)</p> <pre> class DespatchAdviceLineItem - maintenance view «class» DespatchAdviceLineItem + lineItemNumber :positiveInteger + parentLineItemNumber :positiveInteger [0..1] + despatchedQuantity :Quantity + countryOfLastProcessing :CountryCode [0..1] + countryOfOrigin :CountryCode [0..1] + extension :extension [0..1] + freeGoodsQuantity :Quantity [0..1] + handlingInstructionCode :HandlingInstructionCode [0..1] + note :Description500 [0..1] + pickUpDateTime :dateTime [0..1] + requestedQuantity :Quantity [0..1] «association» + avpList :Ecom_AttributeValuePairList [0..1] maintenance Change: (Complete) 3.2 added +avpList (WR 14-110) Change: (Complete) 3.2 added +parentLineItemNumber (WR 14-021 & 14-044) Change: (New) 3.3 added +pickUpDateTime (WR 16-246) Change: (New) 3.3 added association to Amount named +totalLineAmount (WR 15-038) Change: (New) 3.3 added association to Contact named +costAccountingContact (WR 16-060 & 061) Change: (New) 3.3 added association to Ecom_DocumentReference named +customerDocumentReference (WR 16-068) Change: (New) 3.3 added association to Ecom_PartyIdentification named +customer (WR 16-247) Change: (New) 3.3 added association to PackagingMarking (WR 16-100) Change: (New) 3.3 added association to the TransactionalGenericReference (WR 16-031) Change: (New) 3.3 changed association from ConsignmentIdentification to Ecom_ConsignmentIdentification (WR 15-314) Change: (New) 3.3 changed association from TradeItemIdentification to Ecom_TradeItemIdentification (WR 15-314) Change: (New) 3.3 changed associations from DocumentReference to Ecom_DocumentReference (WR 15-314) </pre> <p>Shared Common Components::Contact 0..*</p>	<p>16-000060 16-000061</p>
<ul style="list-style-type: none"> Created Ecom_DocumentReference class and changed association from the previous DocumentReference (WR 15-314) Added association to Ecom_DocumentReference named +customerDocumentReference (WR16-068) <pre> class DespatchAdviceLineItem - maintenance view «class» DespatchAdviceLineItem + lineItemNumber :positiveInteger + parentLineItemNumber :positiveInteger [0..1] + despatchedQuantity :Quantity + countryOfLastProcessing :CountryCode [0..1] + countryOfOrigin :CountryCode [0..1] + extension :extension [0..1] + freeGoodsQuantity :Quantity [0..1] + handlingInstructionCode :HandlingInstructionCode [0..1] + note :Description500 [0..1] + pickUpDateTime :dateTime [0..1] + requestedQuantity :Quantity [0..1] «association» + avpList :Ecom_AttributeValuePairList [0..1] maintenance Change: (Complete) 3.2 added +avpList (WR 14-110) Change: (Complete) 3.2 added +parentLineItemNumber (WR 14-021 & 14-044) Change: (New) 3.3 added +pickUpDateTime (WR 16-246) Change: (New) 3.3 added association to Amount named +totalLineAmount (WR 15-038) Change: (New) 3.3 added association to Contact named +costAccountingContact (WR 16-060 & 061) Change: (New) 3.3 added association to Ecom_DocumentReference named +customerDocumentReference (WR 16-068) Change: (New) 3.3 added association to Ecom_PartyIdentification named +customer (WR 16-247) Change: (New) 3.3 added association to PackagingMarking (WR 16-100) Change: (New) 3.3 added association to the TransactionalGenericReference (WR 16-031) Change: (New) 3.3 changed association from ConsignmentIdentification to Ecom_ConsignmentIdentification (WR 15-314) Change: (New) 3.3 changed association from TradeItemIdentification to Ecom_TradeItemIdentification (WR 15-314) Change: (New) 3.3 changed associations from DocumentReference to Ecom_DocumentReference (WR 15-314) </pre> <p>Ecom_EntryIdentification 0..1</p> <p>promotionalDeal 0..1</p> <p>customerReference 0..1</p> <p>specification 0..1</p> <p>deliveryNote 0..1</p> <p>contract 0..1</p> <p>purchaseOrder 0..1</p> <p>purchaseConditions 0..1</p> <p>customerDocumentReference 0..1</p> <p>Ecom Common Components::Ecom_DocumentReference</p> <p>Change: (New) 3.3 added +referencedDocumentId (WR 16-261)</p> <p>Change: (New) 3.3 New class (WR 15-314)</p>	<p>15-000314 16-000068</p>

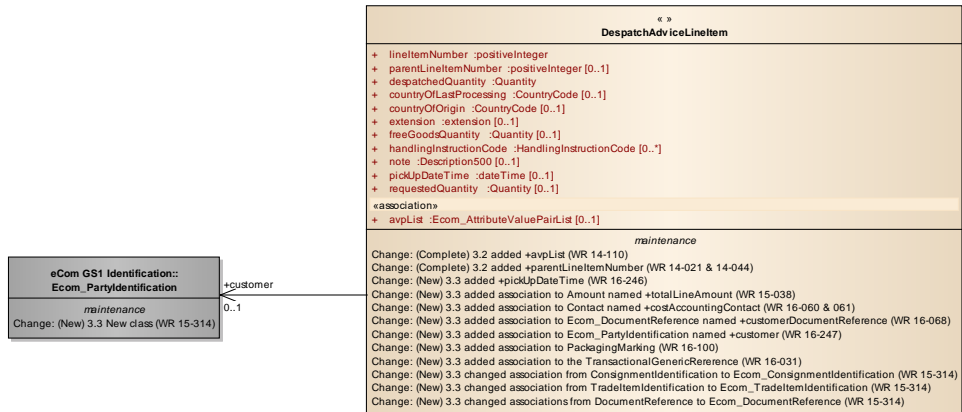
Change

Associated
WR

- Created Ecom_PartyIdentification class and changed association from the previous PartyIdentification (WR 15-314)
- added association to Ecom_PartyIdentification named +customer (WR 16-247)

15-000314
16-000247

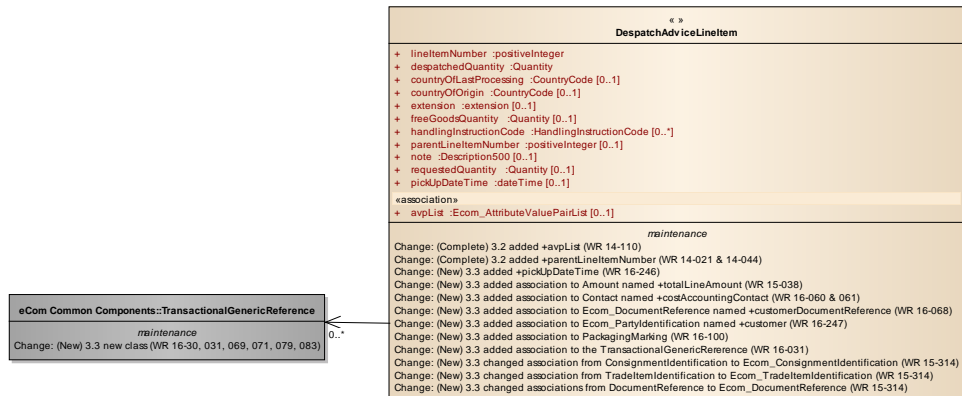
class DespatchAdviceLineItem - maintenance view



Created class TransactionalGenericReference and associated it to the DespatchAdviceLineItem class (WR 16-031)

16-000031

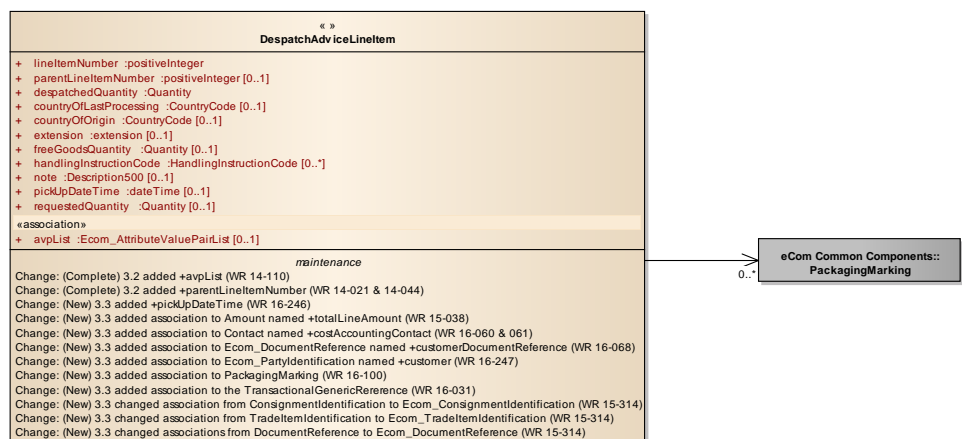
class DespatchAdviceLineItem - maintenance view



Created class PackagingMarking and associated it to DespatchAdviceLineItem class (WR 16-100)

16-000100

class DespatchAdviceLineItem - maintenance view



Change	Associated WR
<p>Created Ecom_ConsignmentIdentification class and changed association from the previous ConsignmentIdentification (WR 15-314)</p> <pre> class DespatchAdviceLineItem - maintenance view « » DespatchAdviceLineItem + lineItemNumber :positiveInteger + parentLineItemNumber :positiveInteger [0..1] + dispatchedQuantity :Quantity + countryOfLastProcessing :CountryCode [0..1] + countryOfOrigin :CountryCode [0..1] + extension :extension [0..1] + freeGoodsQuantity :Quantity [0..1] + handlingInstructionCode :HandlingInstructionCode [0..1] + note :Description500 [0..1] + pickupDateTime :dateTime [0..1] + requestedQuantity :Quantity [0..1] «association» + avpList :Ecom_AttributeValuePairList [0..1] maintenance Change: (Complete) 3.2 added +avpList (WR 14-110) Change: (Complete) 3.2 added +parentLineItemNumber (WR 14-021 & 14-044) Change: (New) 3.3 added +pickupDateTime (WR 16-246) Change: (New) 3.3 added association to Amount named +totalLineAmount (WR 15-038) Change: (New) 3.3 added association to Contact named +cosAccountingContact (WR 16-060 & 061) Change: (New) 3.3 added association to Ecom_DocumentReference named +customerDocumentReference (WR 16-068) Change: (New) 3.3 added association to Ecom_PartyIdentification named +customer (WR 16-247) Change: (New) 3.3 added association to PackagingMarking (WR 16-100) Change: (New) 3.3 added association to the TransactionalGenericReference (WR 16-031) Change: (New) 3.3 changed association from ConsignmentIdentification to Ecom_ConsignmentIdentification (WR 15-314) Change: (New) 3.3 changed association from TradeItemIdentification to Ecom_TradeItemIdentification (WR 15-314) Change: (New) 3.3 changed associations from DocumentReference to Ecom_DocumentReference (WR 15-314) </pre> <p>+referencedConsignment 0..1</p> <p>eCom GS1 Identification: Ecom_ConsignmentIdentification maintenance Change: (New) 3.3 New class (WR 15-314)</p>	15-000314
<ul style="list-style-type: none"> ■ added association to Person class named driverID (WR 13-203) ■ added association to Person class named receiverID (WR 13-203) <pre> class DespatchAdviceTransportInformation - maintenance view « » DespatchAdviceTransportInformation + transportMeansID :Identifier [0..1] + transportMeansName :string [0..1] = (1..80) + transportModeCode :TransportModeCode [0..1] + routeID :Identifier [0..1] maintenance Change: (Complete) 3.2 added +routeID (WR 13-203) Change: (Complete) 3.2 added +transportMeansName (WR 13-203) Change: (Complete) 3.2 added association to CarrierTrackAndTraceInformation (WR 13-106) Change: (Complete) 3.2 added association to Contact class with role name +driver (WR 13-203) Change: (Complete) 3.2 added association to Contact class with role name +receiver (WR 13-203) Change: (New) 3.3 added association to Person named +driverID (WR 13-203) Change: (New) 3.3 added association to Person named +receiverID (WR 13-203) Change: (New) 3.3 added association to TransportSeal (WR 16-095) Change: (New) 3.3 added role name +consignmentIdentification to Ecom_ConsignmentIdentification association for backward compatibility Change: (New) 3.3 added role name +shipmentIdentification to Ecom_ShipmentIdentification association for backward compatibility Change: (New) 3.3 changed association from ConsignmentIdentification to Ecom_ConsignmentIdentification (WR 15-314) Change: (New) 3.3 changed association from ShipmentIdentification to Ecom_ShipmentIdentification (WR 15-314) Change: (New) 3.3 changed association named +billOfLadingNumber from DocumentReference to Ecom_DocumentReference (WR 15-314) </pre> <p>+driverID 0..1</p> <p>+receiverID 0..1</p> <p>eCom Common Components::Person</p>	13-000203
<p>Added association to TransportSeal (WR 16-095)</p> <pre> class DespatchAdviceTransportInformation - maintenance view « » DespatchAdviceTransportInformation + transportMeansID :Identifier [0..1] + transportMeansName :string [0..1] = (1..80) + transportModeCode :TransportModeCode [0..1] + routeID :Identifier [0..1] maintenance Change: (Complete) 3.2 added +routeID (WR 13-203) Change: (Complete) 3.2 added +transportMeansName (WR 13-203) Change: (Complete) 3.2 added association to CarrierTrackAndTraceInformation (WR 13-106) Change: (Complete) 3.2 added association to Contact class with role name +driver (WR 13-203) Change: (Complete) 3.2 added association to Contact class with role name +receiver (WR 13-203) Change: (New) 3.3 added association to Person named +driverID (WR 13-203) Change: (New) 3.3 added association to Person named +receiverID (WR 13-203) Change: (New) 3.3 added association to TransportSeal (WR 16-095) Change: (New) 3.3 added role name +consignmentIdentification to Ecom_ConsignmentIdentification association for backward compatibility Change: (New) 3.3 added role name +shipmentIdentification to Ecom_ShipmentIdentification association for backward compatibility Change: (New) 3.3 changed association from ConsignmentIdentification to Ecom_ConsignmentIdentification (WR 15-314) Change: (New) 3.3 changed association from ShipmentIdentification to Ecom_ShipmentIdentification (WR 15-314) Change: (New) 3.3 changed association named +billOfLadingNumber from DocumentReference to Ecom_DocumentReference (WR 15-314) </pre> <p>0..1</p> <p>eCom Common Components::TransportSeal</p>	16-000095

Change	Associated WR
<p>Created Ecom_ConsignmentIdentification class and changed association from the previous ConsignmentIdentification; added association name +consignmentIdentification (WR 15-314)</p> <p>class DespatchAdviceTransportInformation - maintenance view</p> <p>Change: (Complete) 3.2 added +routeID (WR 13-203) Change: (Complete) 3.2 added +transportMeanName (WR 13-203) Change: (Complete) 3.2 added association to CarrierTrackAndTraceInformation (WR 13-106) Change: (Complete) 3.2 added association to Contact class with role name +driver (WR 13-203) Change: (Complete) 3.2 added association to Contact class with role name +receiver (WR 13-203) Change: (New) 3.3 added association to Person named +driverID (WR 13-203) Change: (New) 3.3 added association to Person named +receiverID (WR 13-203) Change: (New) 3.3 added association to TransportSeal (WR 16-095) Change: (New) 3.3 added role name +consignmentIdentification to Ecom_ConsignmentIdentification association for backward compatibility Change: (New) 3.3 added role name +shipmentIdentification to Ecom_ShipmentIdentification association for backward compatibility Change: (New) 3.3 changed association from ConsignmentIdentification to Ecom_ConsignmentIdentification (WR 15-314) Change: (New) 3.3 changed association from ShipmentIdentification to Ecom_ShipmentIdentification (WR 15-314) Change: (New) 3.3 changed association named +billOfLadingNumber from DocumentReference to Ecom_DocumentReference (WR 15-314)</p>	15-000314
<p>Created Ecom_ShipmentIdentification class and changed association from the previous ShipmentIdentification added association name +shipmentIdentification (WR 15-314)</p> <p>class DespatchAdviceTransportInformation - maintenance view</p> <p>Change: (Complete) 3.2 added +routeID (WR 13-203) Change: (Complete) 3.2 added +transportMeanName (WR 13-203) Change: (Complete) 3.2 added association to CarrierTrackAndTraceInformation (WR 13-106) Change: (Complete) 3.2 added association to Contact class with role name +driver (WR 13-203) Change: (Complete) 3.2 added association to Contact class with role name +receiver (WR 13-203) Change: (New) 3.3 added association to Person named +driverID (WR 13-203) Change: (New) 3.3 added association to Person named +receiverID (WR 13-203) Change: (New) 3.3 added association to TransportSeal (WR 16-095) Change: (New) 3.3 added role name +consignmentIdentification to Ecom_ConsignmentIdentification association for backward compatibility Change: (New) 3.3 added role name +shipmentIdentification to Ecom_ShipmentIdentification association for backward compatibility Change: (New) 3.3 changed association from ConsignmentIdentification to Ecom_ConsignmentIdentification (WR 15-314) Change: (New) 3.3 changed association from ShipmentIdentification to Ecom_ShipmentIdentification (WR 15-314) Change: (New) 3.3 changed association named +billOfLadingNumber from DocumentReference to Ecom_DocumentReference (WR 15-314)</p>	15-000314
<p>Created Ecom_DocumentReference class and changed association from the previous DocumentReference (WR 15-314)</p> <p>class DespatchAdviceTransportInformation - maintenance view</p> <p>Change: (Complete) 3.2 added +routeID (WR 13-203) Change: (Complete) 3.2 added +transportMeanName (WR 13-203) Change: (Complete) 3.2 added association to CarrierTrackAndTraceInformation (WR 13-106) Change: (Complete) 3.2 added association to Contact class with role name +driver (WR 13-203) Change: (Complete) 3.2 added association to Contact class with role name +receiver (WR 13-203) Change: (New) 3.3 added association to Person named +driverID (WR 13-203) Change: (New) 3.3 added association to Person named +receiverID (WR 13-203) Change: (New) 3.3 added association to TransportSeal (WR 16-095) Change: (New) 3.3 added role name +consignmentIdentification to Ecom_ConsignmentIdentification association for backward compatibility Change: (New) 3.3 added role name +shipmentIdentification to Ecom_ShipmentIdentification association for backward compatibility Change: (New) 3.3 changed association from ConsignmentIdentification to Ecom_ConsignmentIdentification (WR 15-314) Change: (New) 3.3 changed association from ShipmentIdentification to Ecom_ShipmentIdentification (WR 15-314) Change: (New) 3.3 changed association named +billOfLadingNumber from DocumentReference to Ecom_DocumentReference (WR 15-314)</p>	15-000314
<p>Created class SplitReference (WR 16-085)</p> <p>class SplitDeliveryReference - maintenance view</p> <p>Change: (New) 3.3 changed association from DocumentReference to Ecom_DocumentReference (WR 15-314) Change: (New) 3.3 new class (WR 16-085)</p>	16-000085

7.5 BMS Release 3.4

Change	Associated WR
<p>Added:</p> <ul style="list-style-type: none"> ■ totalNumberOfLines to the DespatchAdvice class ■ changed multiplicity of totalDepositAmount from 0..1 to 0..* <div> class DespatchAdvice - maintenance view <div> <pre> <root> DespatchAdvice + deliveryTypeCode :DeliveryTypeCode [0..1] + rackIDATPickUpLocation :string [0..*] = {1..35} + totalDepositAmount :Amount [0..*] + note :Description500 [0..1] + totalNumberOfLines :positiveInteger [0..1] maintenance Change: (Complete) 3.1 added +buyer (BRAD WIO-DA-1) Change: (Complete) 3.1 added +seller (BRAD WIO-DA-2) Change: (Complete) 3.2 changed generalisation from Document to eComDocument class to include AVP (WR 14-110) Change: (Complete) 3.3 added +rackIDATPickUpLocation (WR 16-099) Change: (Complete) 3.3 added +totalDepositAmount (WR 16-245) Change: (Complete) 3.3 added association to Ecom_DocumentReference named +blanketOrder (WR 16-024) Change: (Complete) 3.3 added association to Ecom_DocumentReference named +customerDocumentReference (WR 16-068) Change: (Complete) 3.3 added association to Ecom_DocumentReference named +deliverySchedule (WR 16-086) Change: (Complete) 3.3 added association to Ecom_DocumentReference named +invoice (WR 16-087) Change: (Complete) 3.3 added association to Ecom_DocumentReference named +orderResponse (WR 16-089) Change: (Complete) 3.3 added association to Ecom_DocumentReference named +promotionalDeal (WR 16-088) Change: (Complete) 3.3 added association to Ecom_DocumentReference named +returnsInstruction (WR 16-090) Change: (Complete) 3.3 added association to Ecom_DocumentReference named +splitDeliveryReference (WR 16-085) Change: (Complete) 3.3 added association to Ecom_DocumentReference named +transportInstruction (WR 16-084) Change: (Complete) 3.3 added association to EndCustomerRelatedDetails (WR 16-093) Change: (Complete) 3.3 added association to TransactionalGenericReference class (WR 16-031, 069, 079) Change: (Complete) 3.3 added association to TransactionalParty named +freightForwarder (WR 16-094) Change: (Complete) 3.3 added association to TransactionalParty named +invoicee (WR 16-091) Change: (Complete) 3.3 added association to TransactionalParty named +logisticServiceProvider (WR 16-092) Change: (Complete) 3.3 changed association from EntityIdentification to Ecom_EntityIdentification (WR 15-314) Change: (Complete) 3.3 changed associations from DocumentReference to Ecom_DocumentReference (WR 15-314) Change: (New) 3.4 added +totalNumberOfLines (WR 17-034) Change: (New) 3.4 changed multiplicity of +totalDepositAmount from 0..1 to 0..* (WR 18-127) </pre> </div> </div>	<p>17-000034</p> <p>Add:</p> <ul style="list-style-type: none"> ■ number of Lines <p>18-000127</p> <ul style="list-style-type: none"> ■ Make the totalDepositAmount repeatable

Change	Associated WR
<p>Added:</p> <ul style="list-style-type: none"> ■ association named to Ecom_LogisticUnitIdentification parentLogisticUnitId ■ hasItemBeenScannedAtPos ■ Ecom_PartyIdentification named couponClearingHouse ■ new code list DutyFeeTaxLiabilityCode ■ new code list DutyFeeTaxLiabilityCode ■ attribute firstInFirstOutDateTime ■ inventoryStatusType and added missing codes to InventoryStatusCode list ■ actualProcessedQuantity ■ association to Ecom_PartyIdentification named itemOwner ■ association to Ecom_PartyIdentification named originalSupplier 	<p>16-000349 Add:</p> <ul style="list-style-type: none"> ■ Parent logistic unit Id <p>17-000036</p> <ul style="list-style-type: none"> ■ indicator if coupon has been scanned <p>17-000039</p> <ul style="list-style-type: none"> ■ internal code to identify the clearing house <p>17-000311</p> <ul style="list-style-type: none"> ■ is customs bond required ■ is duty processing required ■ first in first out date ■ inventory status code ■ catch quantity ■ item owner ■ supplier identifier

Change	Associated WR
<ul style="list-style-type: none"> License plate number is already available in despatchAdviceTransportInformation – transportMeansID, added TransportMeansType that allows specifying that the ID is related to the trailer. The general code for Trailer has been added to TransportMeansTypeCode list Added transportMeansType attribute to DespatchAdviceTransportInformation class. The attribute contains the TransportMeansTypeCode list with the code 32E– Trailer <pre> class DespatchAdviceTransportInformation - maintenance view « » DespatchAdviceTransportInformation + transportMeansID :Identifier [0..1] + transportMeansName :string [0..1] = {1..80} + transportModeCode :TransportModeCode [0..1] + routeID :Identifier [0..1] + transportMeansType :TransportMeansTypeCode [0..1] maintenance Change: (Complete) 3.2 added +routeID (WR 13-203) Change: (Complete) 3.2 added +transportMeansName (WR 13-203) Change: (Complete) 3.2 added association to CarrierTrackAndTraceInformation (WR 13-106) Change: (Complete) 3.2 added association to Contact class with role name +driver (WR 13-203) Change: (Complete) 3.2 added association to Contact class with role name +receiver (WR 13-203) Change: (Complete) 3.3 added association to Person named +driverID (WR 13-203) Change: (Complete) 3.3 added association to Person named +receiverID (WR 13-203) Change: (Complete) 3.3 added association to TransportSeal (WR 16-095) Change: (Complete) 3.3 added role name +consignmentIdentification to Ecom_ConsignmentIdentification association for backward compatibility Change: (Complete) 3.3 added role name +shipmentIdentification to Ecom_ShipmentIdentification association for backward compatibility Change: (Complete) 3.3 changed association from ConsignmentIdentification to Ecom_ConsignmentIdentification (WR 15-314) Change: (Complete) 3.3 changed association from ShipmentIdentification to Ecom_ShipmentIdentification (WR 15-314) Change: (Complete) 3.3 changed association named +billOfLadingNumber from DocumentReference to Ecom_DocumentReference (WR 15-314) Change: (New) 3.4 added +transportMeansType (WR 17-311 - 318) </pre>	16-000349 Add: <ul style="list-style-type: none"> trailer license number truck license number
Added Packaging hierarchy examples – section 6.2.2	16-000145

7.6 BMS Release 3.5

Change	Associated WR
<p>Added:</p> <ul style="list-style-type: none"> despatchAdviceTypeCode <pre> class DespatchAdvice - maintenance view «root» DespatchAdvice + despatchAdviceTypeCode :DespatchAdviceTypeCode [0..1] + deliveryTypeCode :DeliveryTypeCode [0..1] + rackIDatPickUpLocation :string [0..*] = {1..35} + totalDepositAmount :Amount [0..*] + note :Description500 [0..1] + totalNumberOfLines :positiveInteger [0..1] maintenance Change 3.1 added +buyer (BRAD WIO-DA-1) Complete 3.1 added +seller (BRAD WIO-DA-2) Complete 3.2 changed generalisation from Document to eComDocument class to include AVP (WR 14-110) Complete 3.3 added +rackIDatPickUpLocation (WR 16-099) Complete 3.3 added +totalDepositAmount (WR 16-245) Complete 3.3 added association to Ecom_DocumentReference named +blanketOrder (WR 16-024) Complete 3.3 added association to Ecom_DocumentReference named +customerDocumentReference (WR 16-068) Complete 3.3 added association to Ecom_DocumentReference named +deliverySchedule (WR 16-086) Complete 3.3 added association to Ecom_DocumentReference named +invoice (WR 16-087) Complete 3.3 added association to Ecom_DocumentReference named +orderResponse (WR 16-089) Complete 3.3 added association to Ecom_DocumentReference named +promotionalDeal (WR 16-088) Complete 3.3 added association to Ecom_DocumentReference named +returnsInstruction (WR 16-090) Complete 3.3 added association to Ecom_DocumentReference named +splitDeliveryReference (WR 16-085) Complete 3.3 added association to Ecom_DocumentReference named +transportInstruction (WR 16-084) Complete 3.3 added association to EndCustomerRelatedDetails (WR 16-093) Complete 3.3 added association to TransactionalGenericReference class (WR 16-031, 069, 079) Complete 3.3 added association to TransactionalParty named +freightForwarder (WR 16-094) Complete 3.3 added association to TransactionalParty named +invoicee (WR 16-091) Complete 3.3 added association to TransactionalParty named +logisticServiceProvider (WR 16-092) Complete 3.3 changed association from EntityIdentification to Ecom_EntityIdentification (WR 15-314) Complete 3.3 changed associations from DocumentReference to Ecom_DocumentReference (WR 15-314) Complete 3.4 added +totalNumberOfLines (WR 17-034) Complete 3.4 changed multiplicity of +totalDepositAmount from 0..1 to 0..* (WR 18-127) Complete 3.5 added despatchAdviceTypeCode (WR 20-000394) Active </pre>	<ul style="list-style-type: none"> WR-20-000394

Change	Associated WR
<p>■ Added: Association to Transactional party called Consignee</p> <div data-bbox="204 344 437 367">class DespatchAdvice - maintenance view</div> <div data-bbox="220 389 1244 1003"> <pre> «root, » DespatchAdvice + despatchAdviceTypeCode: DespatchAdviceTypeCode [0..1] + deliveryTypeCode: DeliveryTypeCode [0..1] + rackIDatPickUpLocation: string [0..*] = {1..35} + totalDepositAmount: Amount [0..*] + note: Description500 [0..1] + totalNumberOfLines: positiveInteger [0..1] maintenance Change 3.1 added +buyer (BRAD WIO-DA-1) Complete 3.1 added +seller (BRAD WIO-DA-2) Complete 3.2 changed generalisation from Document to ecomDocument class to include AVP (WR 14-110) Complete 3.3 added +rackIDatPickUpLocation (WR 16-099) Complete 3.3 added +totalDepositAmount (WR 16-245) Complete 3.3 added association to Ecom_DocumentReference named +blanketOrder (WR 16-024) Complete 3.3 added association to Ecom_DocumentReference named +customerDocumentReference (WR 16-068) Complete 3.3 added association to Ecom_DocumentReference named +deliverySchedule (WR 16-086) Complete 3.3 added association to Ecom_DocumentReference named +invoice (WR 16-087) Complete 3.3 added association to Ecom_DocumentReference named +orderResponse (WR 16-089) Complete 3.3 added association to Ecom_DocumentReference named +promotionalDeal (WR 16-088) Complete 3.3 added association to Ecom_DocumentReference named +returnsInstruction (WR 16-090) Complete 3.3 added association to Ecom_DocumentReference named +splitDeliveryReference (WR 16-085) Complete 3.3 added association to Ecom_DocumentReference named +transportInstruction (WR 16-084) Complete 3.3 added association to EndCustomerRelatedDetails (WR 16-093) Complete 3.3 added association to TransactionalGenericReference class (WR 16-031, 069, 079) Complete 3.3 added association to TransactionalParty named +freightForwarder (WR 16-094) Complete 3.3 added association to TransactionalParty named +invoicee (WR 16-091) Complete 3.3 added association to TransactionalParty named +logisticServiceProvider (WR 16-092) Complete 3.3 changed association from EntityIdentification to Ecom_EntityIdentification (WR 15-314) Complete 3.3 changed associations from DocumentReference to Ecom_DocumentReference (WR 15-314) Complete 3.4 added +totalNumberOfLines (WR 17-034) Complete 3.4 changed multiplicity of +totalDepositAmount from 0..1 to 0..* (WR 18-127) Complete 3.5 added association to TransactionalParty named +consignee (WR 20-422) Active 3.5 added despatchAdviceTypeCode (WR 20-000394) Active </pre> </div>	<p>■ WR 20-422</p>

Change

Added new attribute to root class of DespatchAdviceLineItem called **correspondingQuantity**

class DespatchAdviceLineitem - maintenance view

DespatchAdviceLineitem

+ lineItemNumber: positiveInteger
+ despatchedQuantity: Quantity
+ correspondingQuantity: Quantity [0..1]
+ countryOfLastProcessing: CountryCode [0..1]
+ countryOfOrigin: CountryCode [0..1]
+ extension: extension [0..1]
+ freeGoodsQuantity : Quantity [0..1]
+ handlingInstructionCode: HandlingInstructionCode [0..*]
+ parentLineItemNumber: positiveInteger [0..1]
+ note: Description500 [0..1]
+ requestedQuantity : Quantity [0..1]
+ pickUpDate: date:Time [0..1]
+ actualProcessedQuantity: Quantity [0..1]
+ dutyFeeTaxLiability: DutyFeeTaxLiabilityCode [0..*]
+ firstInFirstOutDate: date:Time [0..1]
+ hasItemBeenScannedAtPos: NonBinaryLogicEnumeration [0..1]
+ inventoryStatusType: InventoryStatusCode [0..1]

«association»

+ avpList: Ecom_AttributeValuePairList [0..1]

Change

3.2 added +avpList (WR 14-110)
3.2 added +parentLineItemNumber (WR 14-021 & 14-044)
3.3 added +pickUpDate:Time (WR 16-246)
3.3 added association to Amount named +totalLineAmount (WR 15-038)
3.3 added association to Contact named +costAccountingContact (WR 16-060 & 061)
3.3 added association to Ecom_DocumentReference named +customerDocumentReference (WR 16-068)
3.3 added association to Ecom_PartyIdentification named +customer (WR 16-247)
3.3 added association to Ecom_PartyIdentification named +itemOwner (WR 17-311)
3.3 added association to PackagingMarking (WR 16-100)
3.3 added association to the TransactionalGenericReference (WR 16-031)
3.3 changed association from ConsignmentIdentification to Ecom_ConsignmentIdentification (WR 15-314)
3.3 changed association from TradeItemIdentification to Ecom_TradeItemIdentification (WR 15-314)
3.3 changed associations from DocumentReference to Ecom_DocumentReference (WR 15-314)
3.4 added +actualProcessedQuantity (WR 17-311 - 318)
3.4 added +dutyFeeTaxLiability (WR 17-311-318)
3.4 added +firstInFirstOutDate:Time (WR 17-311-318)
3.4 added +hasItemBeenScannedAtPos (WR 17-036)
3.4 added +inventoryStatusType (WR 17-311-318)
3.4 added association to Ecom_PartyIdentification named couponClearingHouse (WR 17-039 - 040)
3.4 added association to Ecom_PartyIdentification named itemOwner (WR 17-311 - 318)
3.4 added association to Ecom_PartyIdentification named originalSupplier (WR 17-311 - 318)
3.5 added new attribute correspondingQuantity (WR-20-424)

WR 20-424

Added new attribute to DespatchAdviceQuantityVariance called **firstDeliveryDateTime**

class DespatchAdviceLineitem - maintenance view

DespatchAdviceLineitem

+ lineItemNumber: positiveInteger
+ despatchedQuantity: Quantity
+ correspondingQuantity: Quantity [0..1]
+ countryOfLastProcessing: CountryCode [0..1]
+ countryOfOrigin: CountryCode [0..1]
+ extension: extension [0..1]
+ freeGoodsQuantity : Quantity [0..1]
+ handlingInstructionCode: HandlingInstructionCode [0..*]
+ parentLineItemNumber: positiveInteger [0..1]
+ note: Description500 [0..1]
+ requestedQuantity : Quantity [0..1]
+ pickUpDate: date:Time [0..1]
+ actualProcessedQuantity: Quantity [0..1]
+ dutyFeeTaxLiability: DutyFeeTaxLiabilityCode [0..*]
+ firstInFirstOutDate: date:Time [0..1]
+ hasItemBeenScannedAtPos: NonBinaryLogicEnumeration [0..1]
+ inventoryStatusType: InventoryStatusCode [0..1]

«association»

+ avpList: Ecom_AttributeValuePairList [0..1]

Change

3.2 added +avpList (WR 14-110)
3.2 added +parentLineItemNumber (WR 14-021 & 14-044)
3.3 added +pickUpDate:Time (WR 16-246)
3.3 added association to Amount named +totalLineAmount (WR 15-038)
3.3 added association to Contact named +costAccountingContact (WR 16-060 & 061)
3.3 added association to Ecom_DocumentReference named +customerDocumentReference (WR 16-068)
3.3 added association to Ecom_PartyIdentification named +customer (WR 16-247)
3.3 added association to Ecom_PartyIdentification named +itemOwner (WR 17-311)
3.3 added association to PackagingMarking (WR 16-100)
3.3 added association to the TransactionalGenericReference (WR 16-031)
3.3 changed association from ConsignmentIdentification to Ecom_ConsignmentIdentification (WR 15-314)
3.3 changed association from DocumentReference to Ecom_DocumentReference (WR 15-314)
3.4 added +actualProcessedQuantity (WR 17-311 - 318)
3.4 added +dutyFeeTaxLiability (WR 17-311-318)
3.4 added +firstInFirstOutDate:Time (WR 17-311-318)
3.4 added +hasItemBeenScannedAtPos (WR 17-036)
3.4 added +inventoryStatusType (WR 17-311-318)
3.4 added association to Ecom_PartyIdentification named couponClearingHouse (WR 17-039 - 040)
3.4 added association to Ecom_PartyIdentification named itemOwner (WR 17-311 - 318)
3.4 added association to Ecom_PartyIdentification named originalSupplier (WR 17-311 - 318)
3.5 added new attribute correspondingQuantity (WR-20-424)

DespatchAdviceQuantityVariance

+ varianceReasonCode: varianceReasonCode
+ varianceQuantity: Quantity
+ deliveryDateVariance: date [0..1]
+ firstDeliveryDate: date:Time [0..1]
+ remainingQuantityStatusCode: RemainingQuantityStatusCode [0..1]

Change

3.5 added new attribute firstDeliveryDate (WR 20-423)

WR 20-423

7.1 BMS Release 3.5.1

No work requests. Indirect changes due to upgrade to new Shared and eCom Common libraries.

8 Appendices

Not Applicable

9 Acknowledgements

9.1 Work Group

Function	Name	Company / organisation
Co-chair	Rossner (Pottier), Natascha	GS1 France
Co-chair	Schmidt, Tom Eric	August Storck KG
Member	Bemrose, Jonathan	R&R Ice Cream
Member	Bodemer, Petra	dm-drogerie markt GmbH + Co. KG
Member	Boikanyo, Rebhone	GS1 South Africa / Consumer Goods Council of South Africa
Member	Canada, ON	M3B 3L1
Member	Carlson, Jim	General Mills, Inc.
Member	Chresta, Richard	GS1 Switzerland
Member	Cook, Don	Wal-Mart Stores, Inc.
Member	Cox, Marc	Philips Electronics N.V.
Member	Darnell, David	Systrends
Member	De Flou, Nele	GS1 Belgium & Luxembourg
Member	Dicks, Arne	GS1 Germany
Member	Duvinger, Karina	GS1 Sweden
Member	Foerderer, Klaus	GS1 Germany
Member	Gathmann, Stefan	GS1 Ireland
Member	Grangard, Anders	GS1 Global Office
Member	Harpell, Eileen	GS1 Community Room Staff
Member	Hand, Phil	JDA Software
Member	Herregodts, Kurt	GS1 Belgium & Luxembourg
Member	Kempkes, Fred	Unilever N.V.
Member	Kernan, Brendan	GS1 Ireland
Member	Kidd, Robin	Nestle
Member	Krid, Anne-Claire	GS1 France
Member	Lanoue, Tom	General Mills, Inc.
Member	Laur, Rita	GS1 Canada
Member	Lenman, Mia	GS1 Sweden
Member	Lerch, Hanjoerg	METRO Group
Member	Moberg, Dale	Axway

Function	Name	Company / organisation
Member	Montes de Oca, Alejandra	GS1 Mexico
Member	Ng, Ella	GS1 Australia
Member	Peelen, Esther	GS1 Netherlands
Member	Pelekies, Andreas	GS1 Germany
Member	Perrier, Patricia	GS1 France
Member	Przybilla, Christian	GS1 Germany
Member	Pujol, Xavier	GS1 Spain
Member	Racek, Greg	Wal-Mart Stores, Inc.
Member	Repetto, Mirko	GS1 Italy
Member	Robba, Steven	1WorldSync Holdings, Inc.
Member	Rosell, Pere	GS1 Spain
Member	Rosenberg, Steven	GS1 US
Member	Schmid, Sue	GS1 Australia
Member	Schneider, Christian	GS1 Switzerland
Member	Sehorz, Eugen	GS1 Austria
Member	Sharma, Vishal	General Mills, Inc.
Member	Shimazaki, Ayako	GS1 Japan
Member	Sion, Emilie	GS1 France
Member	Souza, Nadia	GS1 Brasil
Member	Strand, Roman	GS1 Germany
Member	Tan, Milton	GS1 Malaysia
Member	Tompsett, Simon	Waitrose
Member	Trelle, Ute	1WorldSync Holdings, Inc.
Member	Tse, Steve	GS1 Hong Kong
Member	Tyson, Betty	Knouse Foods Cooperative, Inc
Member	Van den Bergh, Senne	GS1 Belgium & Luxembourg
Member	Van der Eijk, Pim	OASIS - Sonnenglanz Consulting BV
Member	Veldhuis, Saskia	Procter & Gamble Co.
Member	Welch, Shan	GS1 UK
Member	Westerkamp, Jan	GS1 Netherlands
Member	Wilson, Mary	GS1 US
Member	Windsperger, Bekki	Best Buy Co., Inc.
Member	Yang, Shaopeng	GS1 China
Member	Yusdiar, Dani	GS1 Indonesia
Member	Zwanziger, Greg	SUPERVALU

9.2 Development Team Members

Function	Name	Organisation
GSMP Process Lead	David Buckley	GS1 Global Office
Technical Development Lead	Miklos Bolyky	GS1 Global Office



Function	Name	Organisation
Peer Review	Mark Van Eeghem	GS1 Global Office